

1 Contextual Elevation
1 : 250



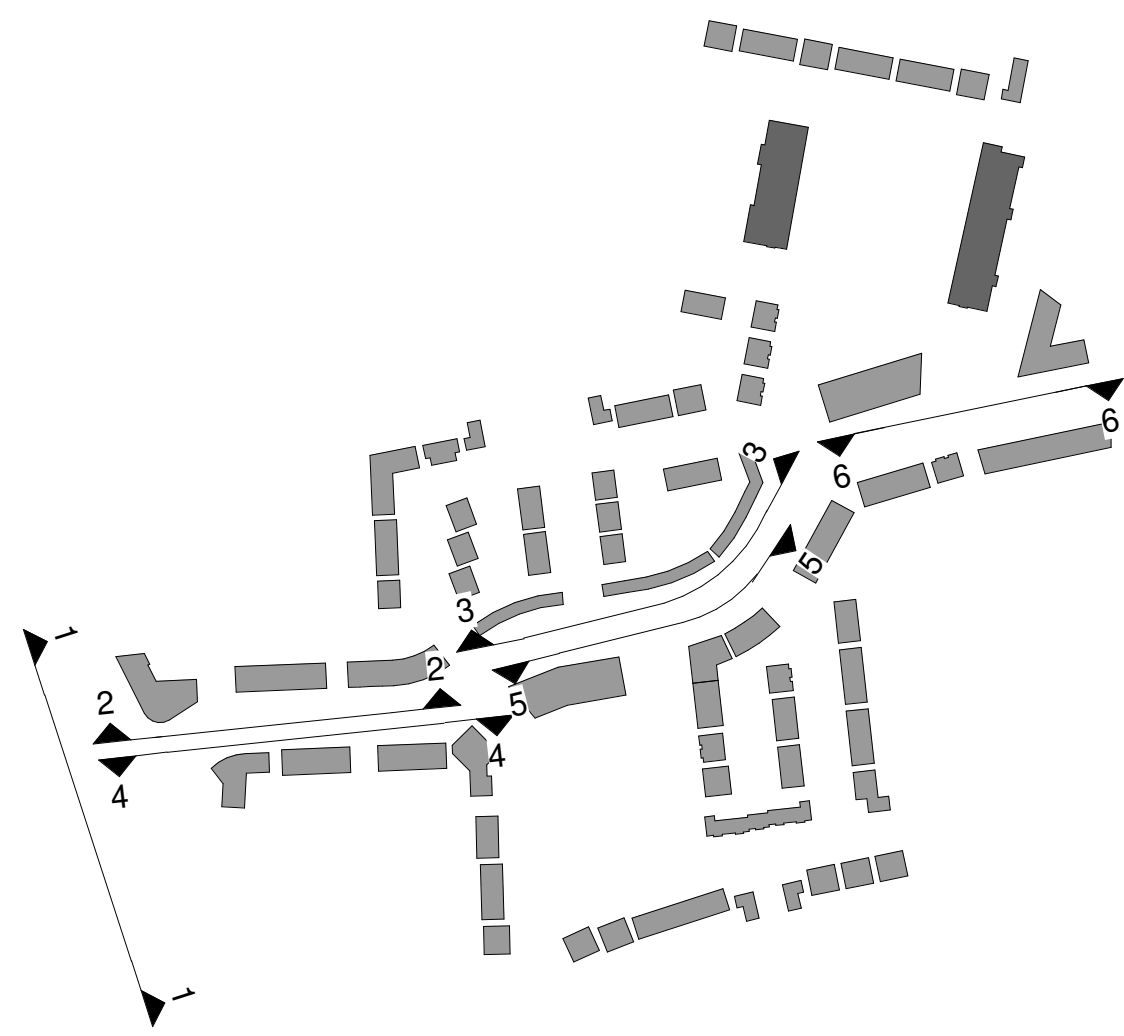
2 Crofton Avenue (North) - Part 01
1 : 200



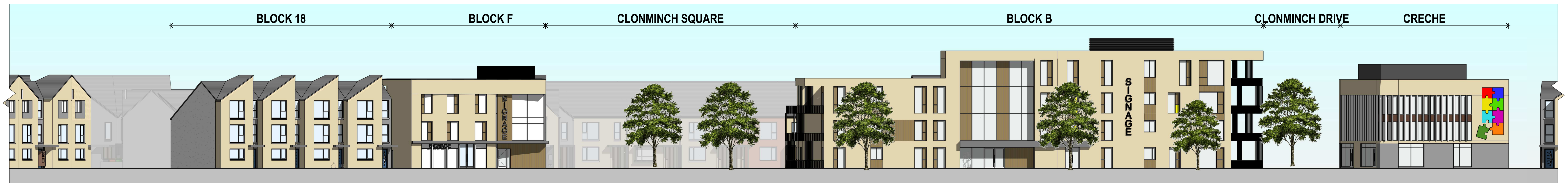
3 Crofton Avenue (North) - Part 02
1 : 200



4 Crofton Avenue (South) - Part 01
1 : 200



7 Key - Site Plan
1 : 3500



5 Crofton Avenue (South) - Part 02
1 : 200



6 Crofton Avenue (South) - Part 03
1 : 200

CPR Note:
All works to be carried out using proper materials which are fit for the use they are intended and for the condition in which they are to be used.

All materials used in connection with the works to comply with the Construction Products Regulation (EU) No. 305/2011 and the harmonised technical specifications/standards that fall within the remit of the CPR No. 305/2011.

van Dijk Architects
HILL HOUSE, MILL STREET, DUNDALK, CO. DUBLIN
PH: 01274 252400 FAX: 01274 252401
INFO@VANDIJKARCHITECTS.COM

DRAWING TITLE					
CROFTON AVENUE ELEVATIONS					
DATE	17.07.2021	BY	1	CLONMINCH	
REVISION	1	DATE	1	STEINFORT INVESTMENTS	
BY	BG	DATE	1	18.10.2021	