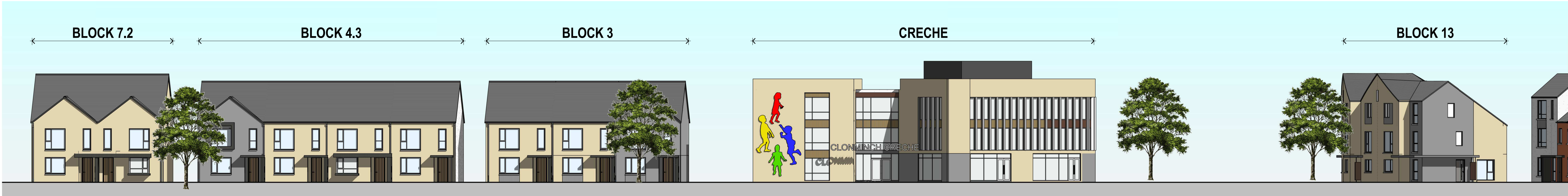


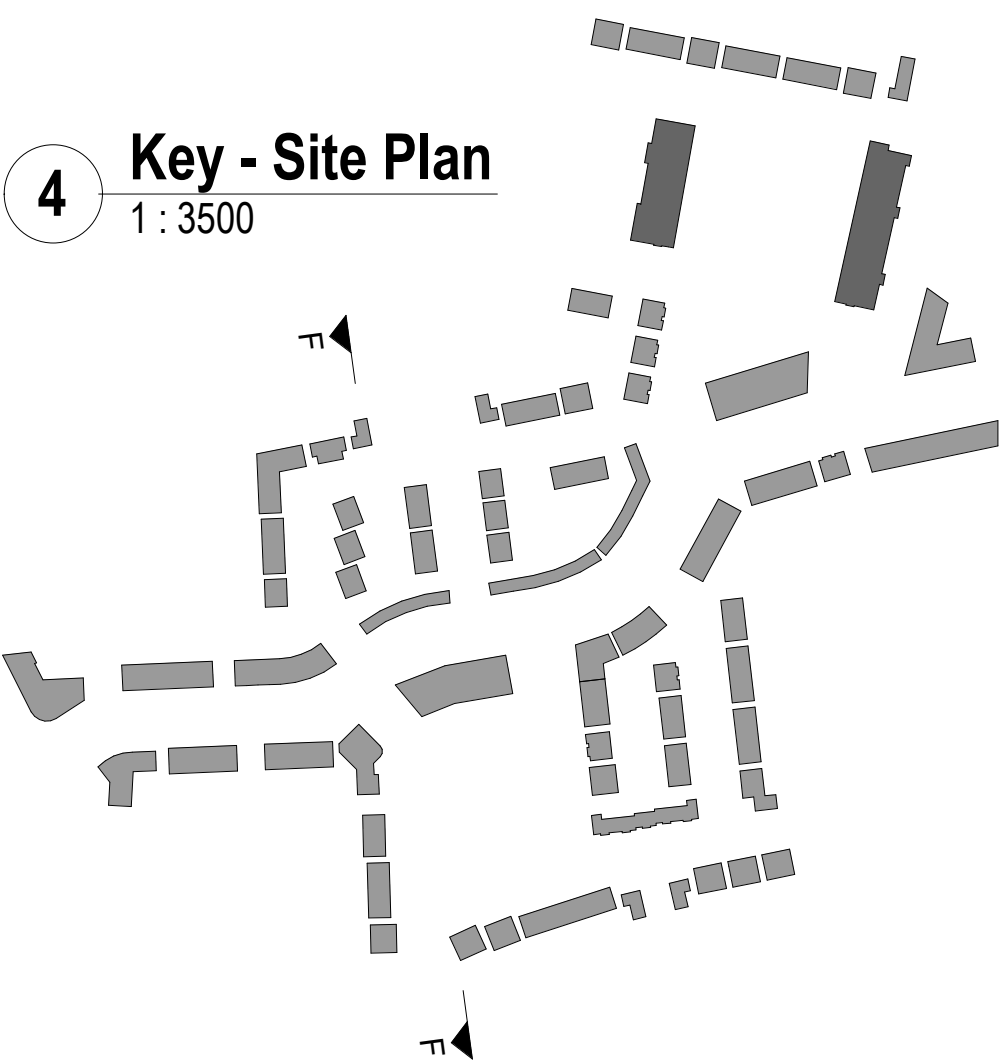
1 Site Section F-F
1 : 500



2 Site Section F-F Part 01
1 : 200



3 Site Section F-F Part 02
1 : 200



4 Key - Site Plan
1 : 3500

CPR Note:
All works to be carried out using proper materials which are fit for the use they are intended and for the condition in which they are to be used.

All materials used in connection with the works to comply with the Construction Products Regulation (EU) No. 305/2011 and the harmonised technical specification/standards that fall within the remit of the CPR No. 305/2011



DRAWING TITLE
SITE SECTION F-F

SCALE	VARIABLES	DRAWING NUMBER	757-PA-020	JOB	CLONMINTH
REVISION	SIZE	CAD REFERENCE		CLIENT	STEINFORT INVESTMENTS
REVISED BY	BG	DRAWING BY	AC	DATE	18.10.2021

NOTE:
IF CLONED DIMENSIONS MUST BE USED IN PREFERENCE TO SCALE DIMENSIONS, ANY DIMENSIONAL DISCREPANCIES MUST BE REPORTED TO THE ARCHITECT IMMEDIATELY. THIS DRAWING REMAINS THE COPYRIGHT OF VAN DIJK ARCHITECTS. IT MUST NOT BE USED FOR ANY PURPOSE BUILDING OR OTHERWISE WITHOUT THE EXPRESSED PERMISSION OF THIS PRACTICE. DO NOT COPY OR REDISTRIBUTE THESE DRAWINGS OR ANY ADDITIONAL INFORMATION WITHOUT THE EXPRESSED APPROVAL OF vanDijk Architects