



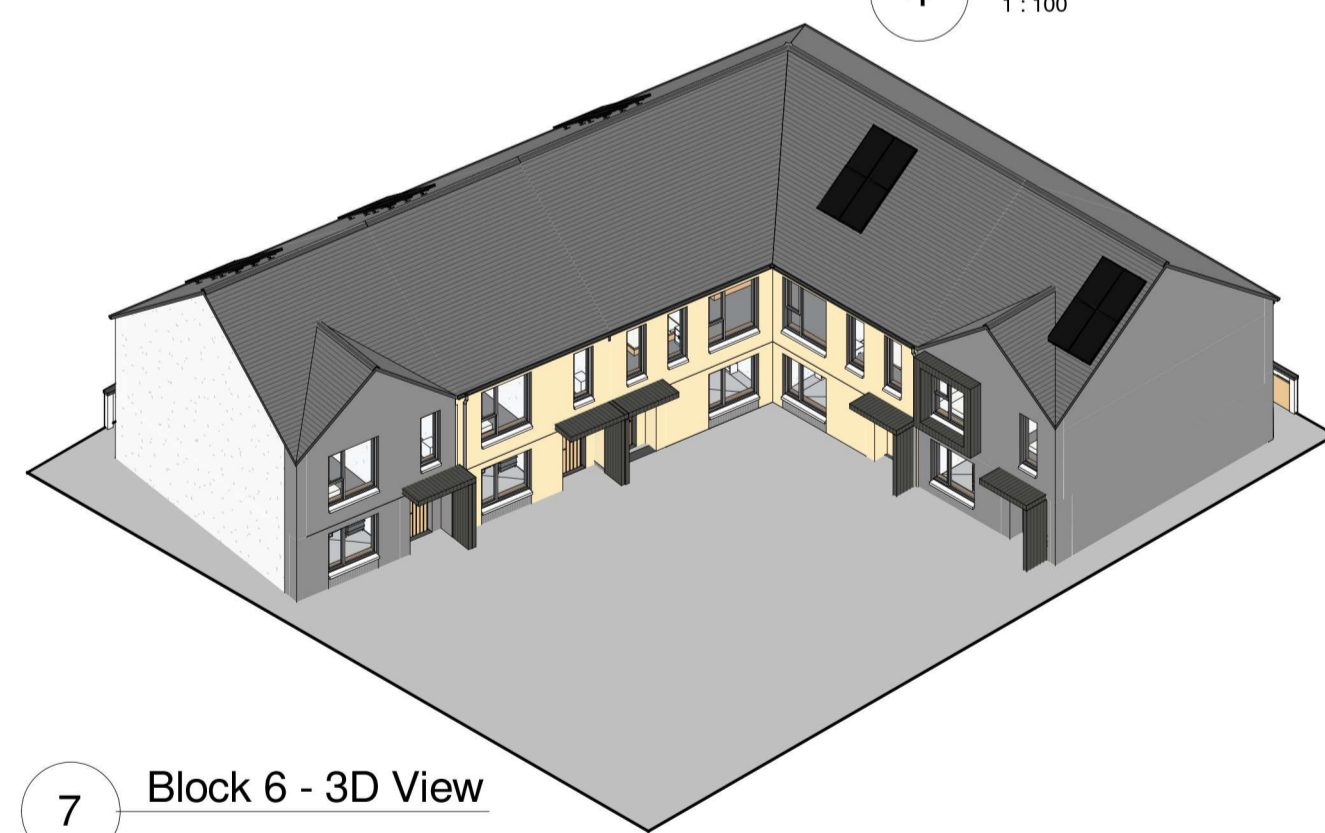
1 Block 6 - Front Elevation 1  
1:100

3 Block 6 - Rear Elevation 1  
1:100

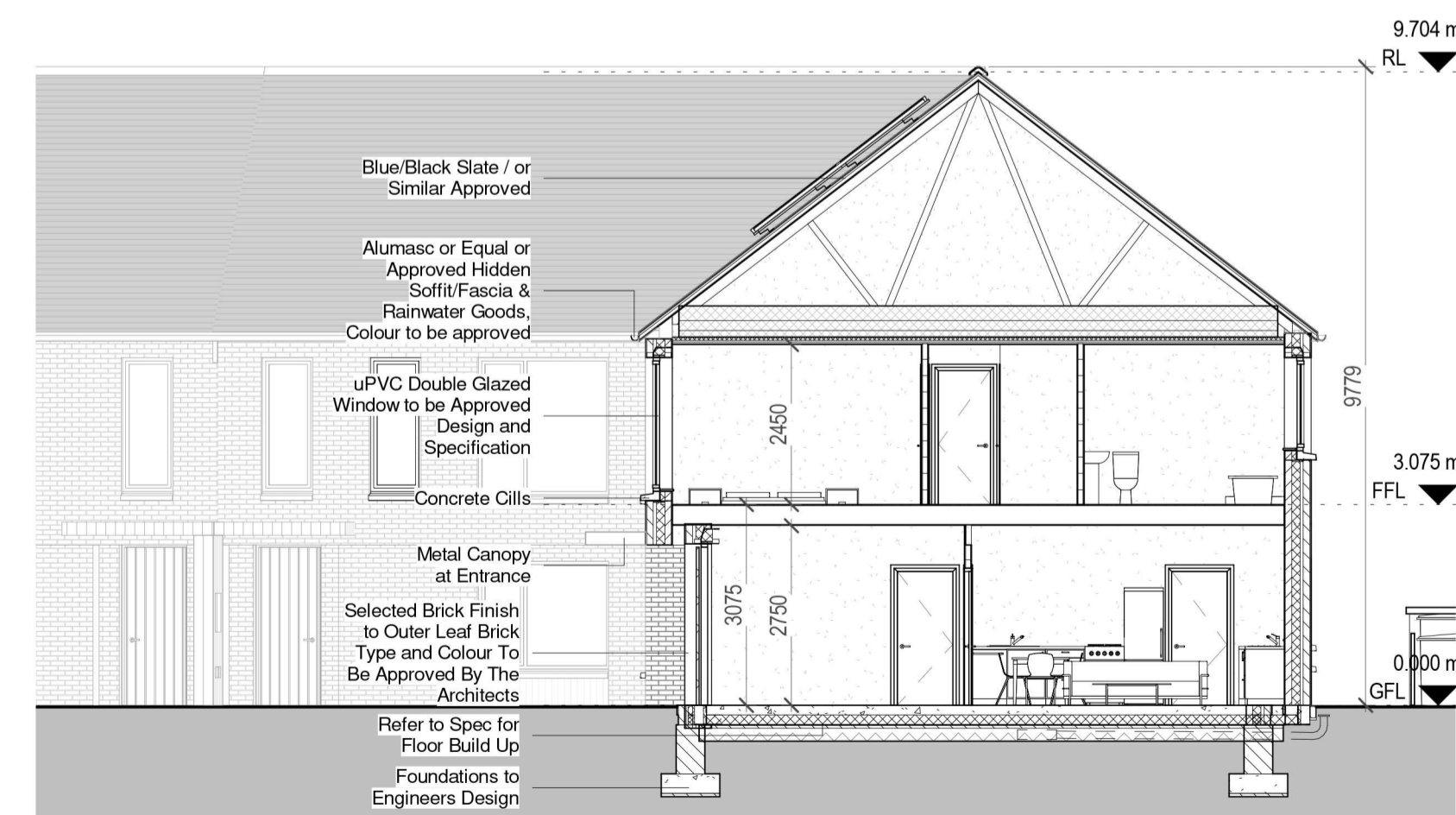


2 Block 6 - Front Elevation 2  
1:100

4 Block 6 - Rear Elevation 2  
1:100



7 Block 6 - 3D View



5 Block 6 - Section A-A  
1:100

|          | Dwelling Type  | Gross Floor Area | Minimum Main Living room | Aggregate living area | Aggregate bedroom area of | Storage |
|----------|----------------|------------------|--------------------------|-----------------------|---------------------------|---------|
| Target   | 3 Bed 5P house | 92               | 13                       | 34                    | 32                        | 5       |
| Proposed | 3 Bed 5P house | 108.25           | 16.60                    | 36.0                  | 37.94                     | 6.7     |
| Target   | 4 Bed 8P house | 120              | 15                       | 40                    | 43                        | 6       |
| Proposed | 4 Bed 8P house | 199              | 20                       | 59.65                 | 64.95                     | 16.10   |

PLEASE NOTE:  
Minimum unobstructed living room width 3.8m.  
Main bedroom area 13m2, Double room 11.4m2 (2.8m minimum width), Single 7.1m2 (2.1m minimum width)



NOTE:  
Levels shown on architectural block plans relate to local Ground Level and do not relate to Ordnance Datum.  
For Finished Ground Floor Levels related to Ordnance Datum see DRFL Engineers drawings numbered: 180002-2000 Roads Layout / 180002-2001 Roads Layout Sheet 1 / 180002-2002 Roads Layout Sheet 2

**CPR Note:**  
All works to be carried out using proper materials which are fit for the use they are intended and for the condition in which they are to be used.  
All materials used in connection with the works to comply with the Construction Products Regulation (EU) No. 305/2011 and the harmonised technical specification/standards that fall within the remit of the CPR No. 305/2011



|   |                                |              |                             |
|---|--------------------------------|--------------|-----------------------------|
| DRAWING TITLE<br>BLOCK 6 - UNITS - B41 / B42 / B43 / C61 ELEVATIONS & SECTION |                                |              |                             |
| SCALE AS INDICATED  | PROJECT NUMBER 1757-PA-BL6-200 | JOB NO       | CLIENT CLONMENCHILL LAMOREE |
| DESIGNED BY AI  | CAD FILE 1757-VDA-M3-B6        | CHECKED BY   | STEINFORT INVESTMENT        |
| ISSUED BY DW  | DATE                           | OCTOBER 2021 |                             |

NOTE:  
FIGURED DIMENSIONS MUST BE USED IN PREFERENCE TO QUALIFIED DIMENSIONS. ANY DIMENSIONAL DISCREPANCIES MUST BE REPORTED TO THE ARCHITECT IMMEDIATELY. THIS DRAWING REMAINS THE COPYRIGHT OF VAN DIJK ARCHITECTS. IT MUST NOT BE USED FOR ANY PURPOSES BEYOND OR OTHERWISE WITHOUT THE EXPRESS PERMISSION OF THE ARCHITECT. DO NOT COPY OR REPRODUCE THESE DRAWINGS OR ANY ADDITIONAL INFORMATION WITHOUT THE EXPRESS APPROVAL OF vanDijk Architects