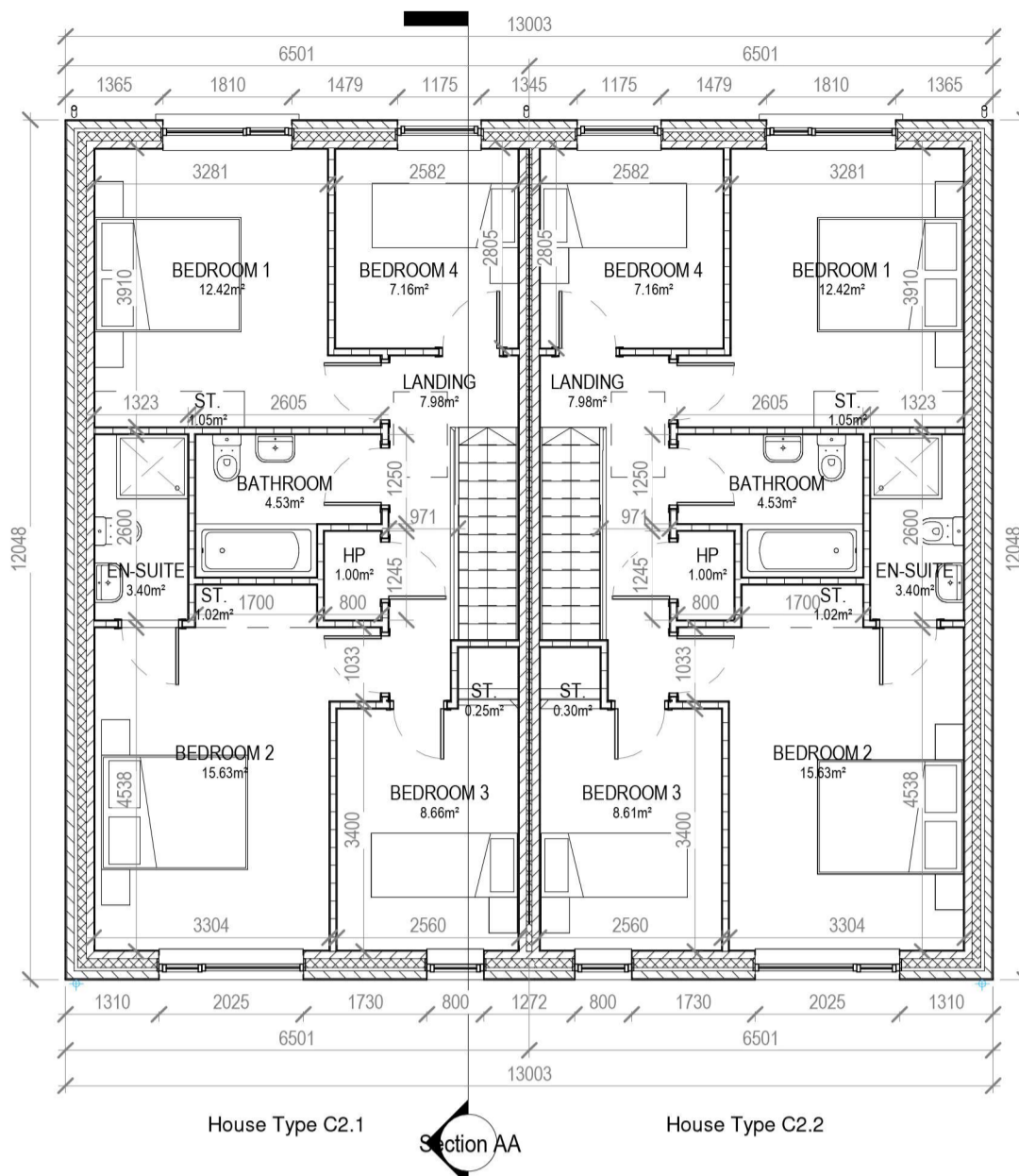
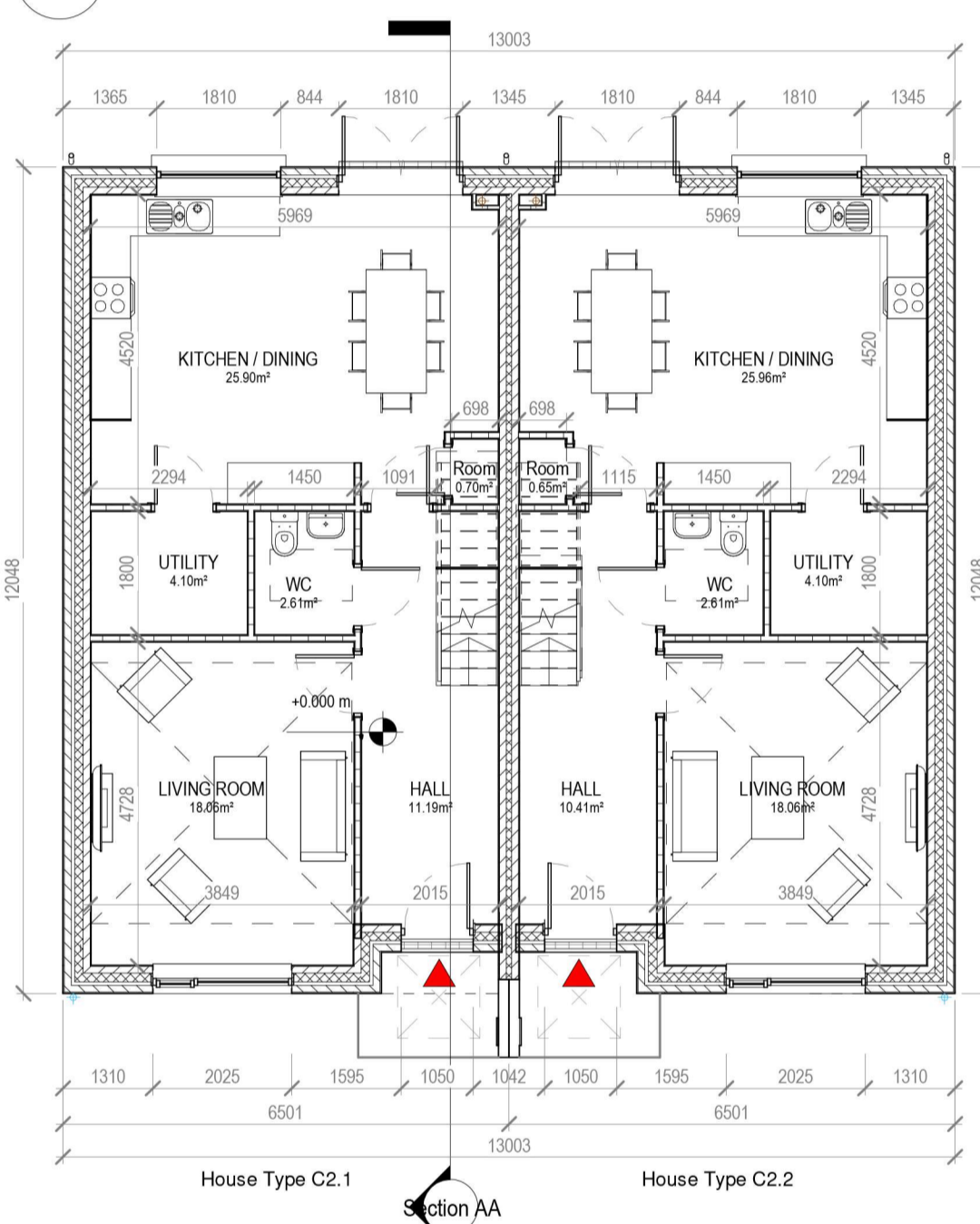


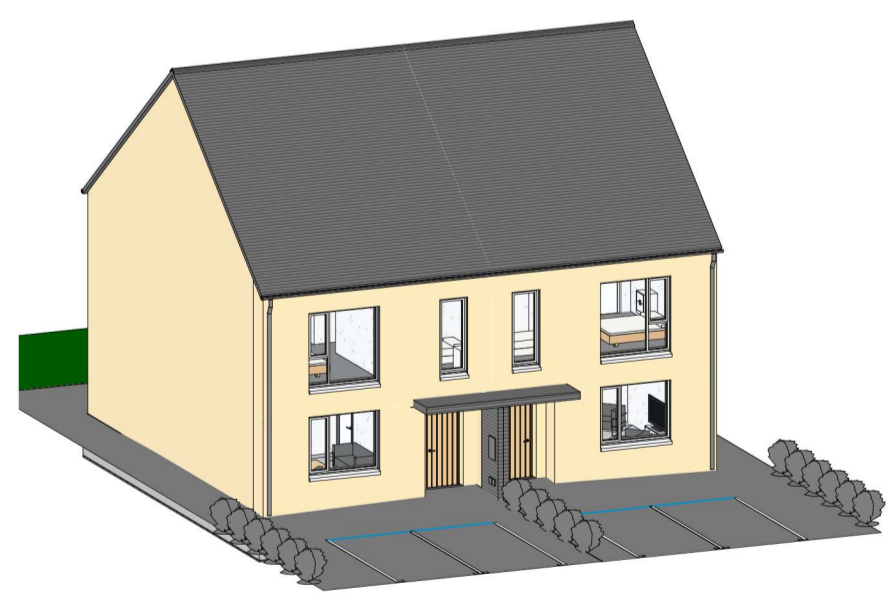
Rev.	By	Date	Description
------	----	------	-------------



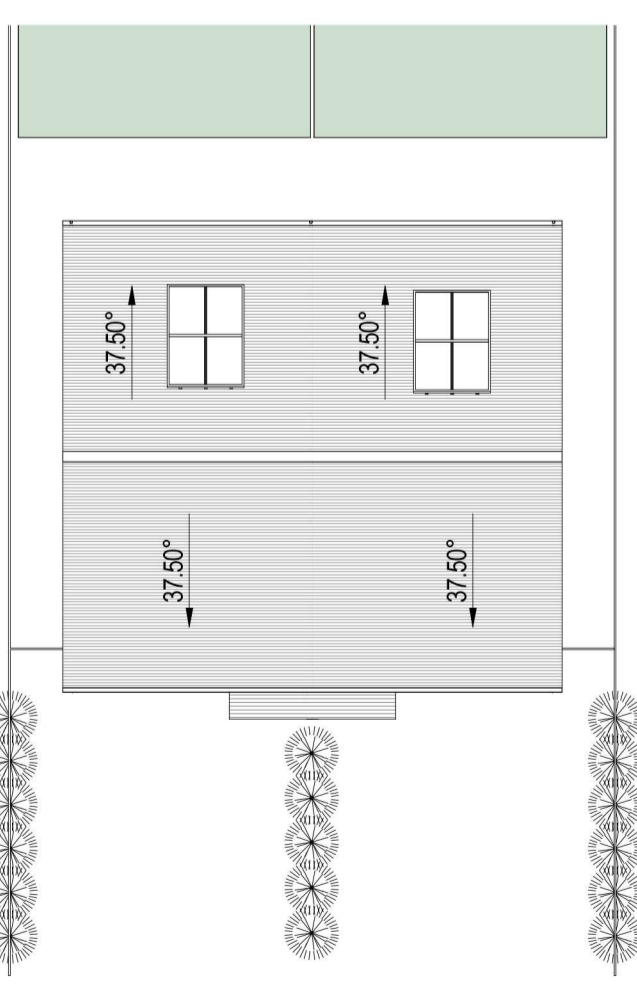
2 Block 7 - First Floor Plan
1:100



1 Block 7 - Ground Floor Plan
1:100



9 Block 7 - 3D View



8 Block 7 - Roof Plan
1:200

HOUSE TYPE C2.1 & C2.2 TERRACE
4 BEDROOM / 6 PERSON
FLOOR AREA 129 M2

	Dwelling Type	Gross Floor Area	Minimum Main Living room	Aggregate living area	Aggregate bedroom area of	Storage
Target	4 Bed 6P house	110	15	40	43	6
Proposed	4 Bed 6P house	129	18.06	43.9	43.8	6.5

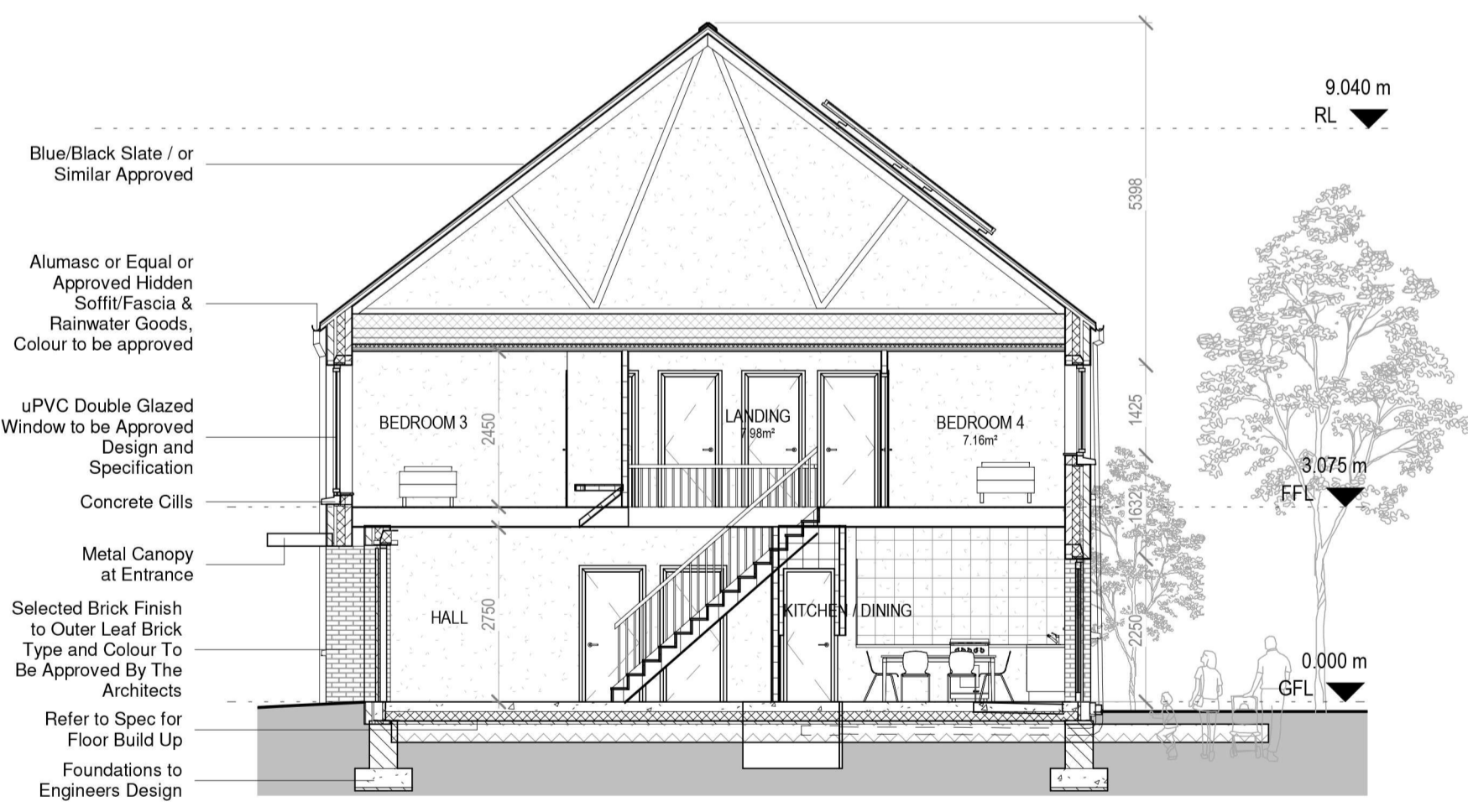
PLEASE NOTE:
Minimum unobstructed living room width 3.8m.
Main bedroom area 13m2, Double room 11.4m2 (2.8m minimum width), Single 7.1m2 (2.1m minimum width)



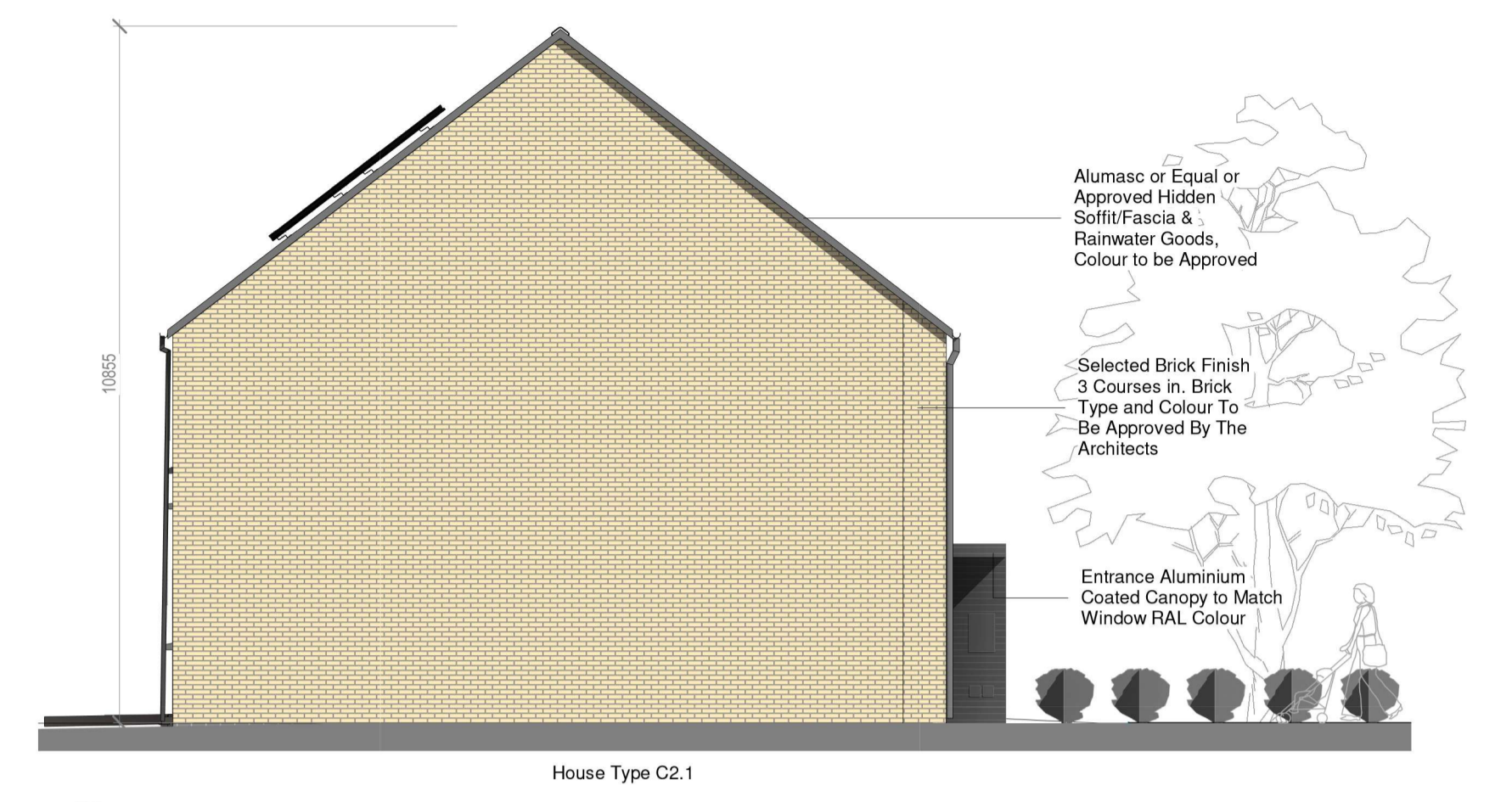
3 Block 7 - Front Elevation
1:100



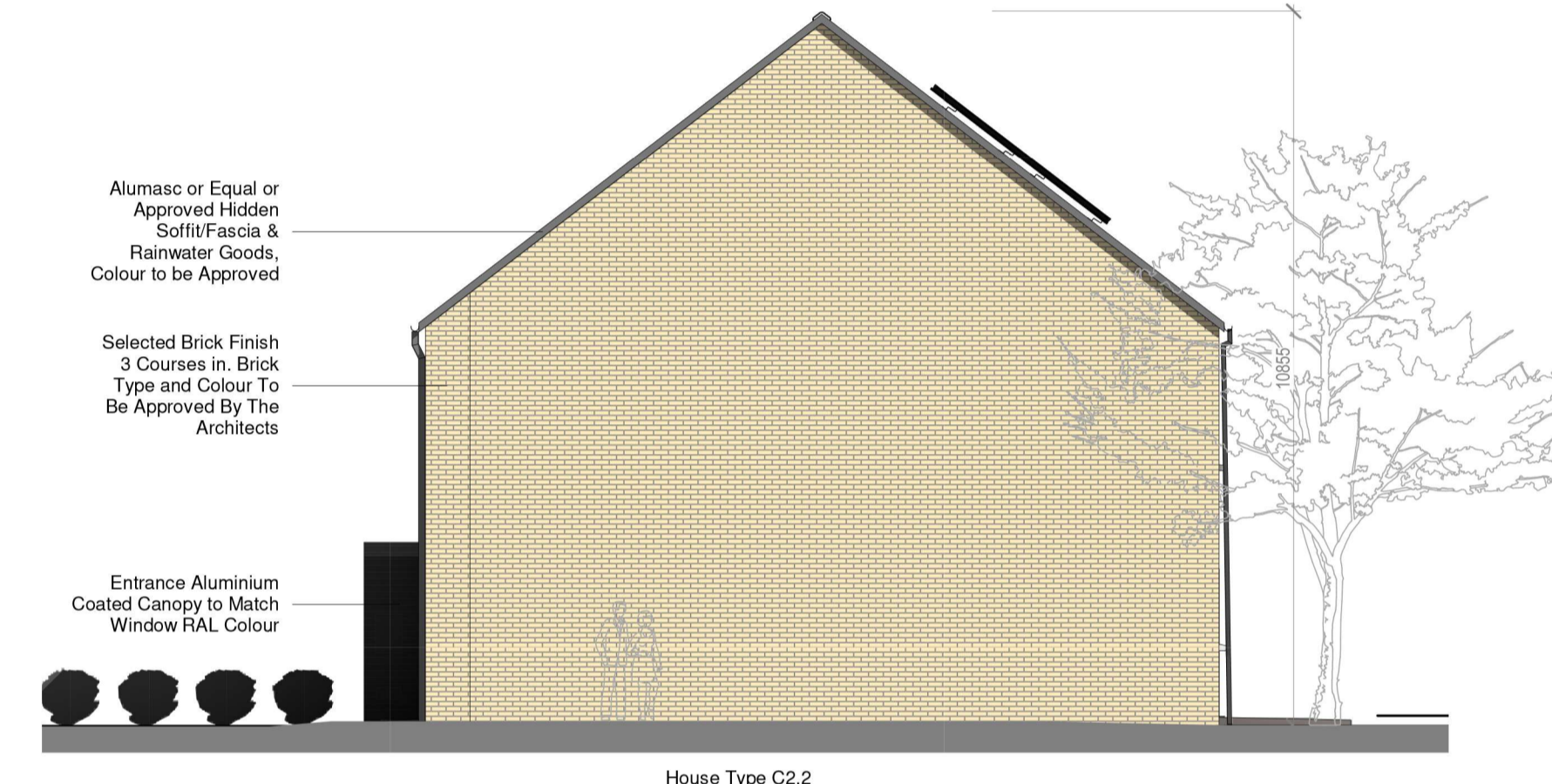
4 Block 7 - Rear Elevation
1:100



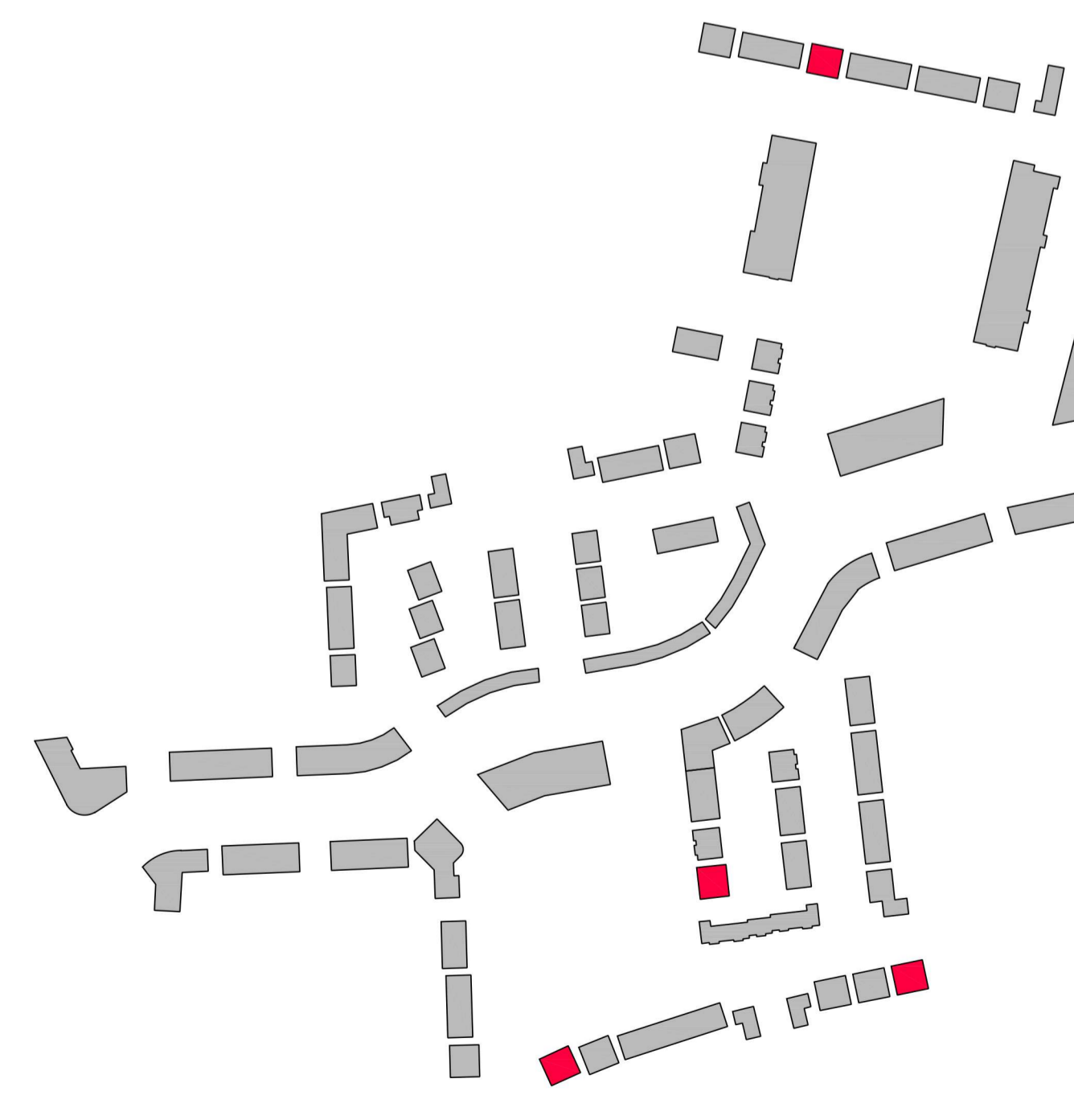
7 Section AA
1:100



5 Block 7 - Side Elevation 1
1:100



6 Block 7 - Side Elevation 2
1:100



NOTE:
Levels shown on architectural block plans relate to local Ground Floor Level and do not relate to Ordnance Datum.
For Finished Ground Floor Levels related to Ordnance Datum see DBFL Engineers drawings numbered: 180002-2000 Roads Layout / 180003-2001 Roads Layout Sheet 1 / 180002-2002 Roads Layout Sheet 2

CPR Note:
All works to be carried out using proper materials which are fit for the use they are intended and for the condition in which they are to be used.

All materials used in connection with the works to comply with the Construction Products Regulation (EU) No. 305/2011 and the harmonised technical specification/standards that fall within the remit of the CPR No. 305/2011



BLOCK 7 - UNITS C21 / C2.2 PLANS, ELEVATION & SECTION			
SCALE INDICATED	1:757-PA-BLZ-100	JOB	CLOMINTCH TULLAMORE
REVISION	AL	CAD	STEINFORT INVESTMENT
REVISED BY	AC	DRAWN BY	DW
DATE		DATE	OCTOBER 2021