



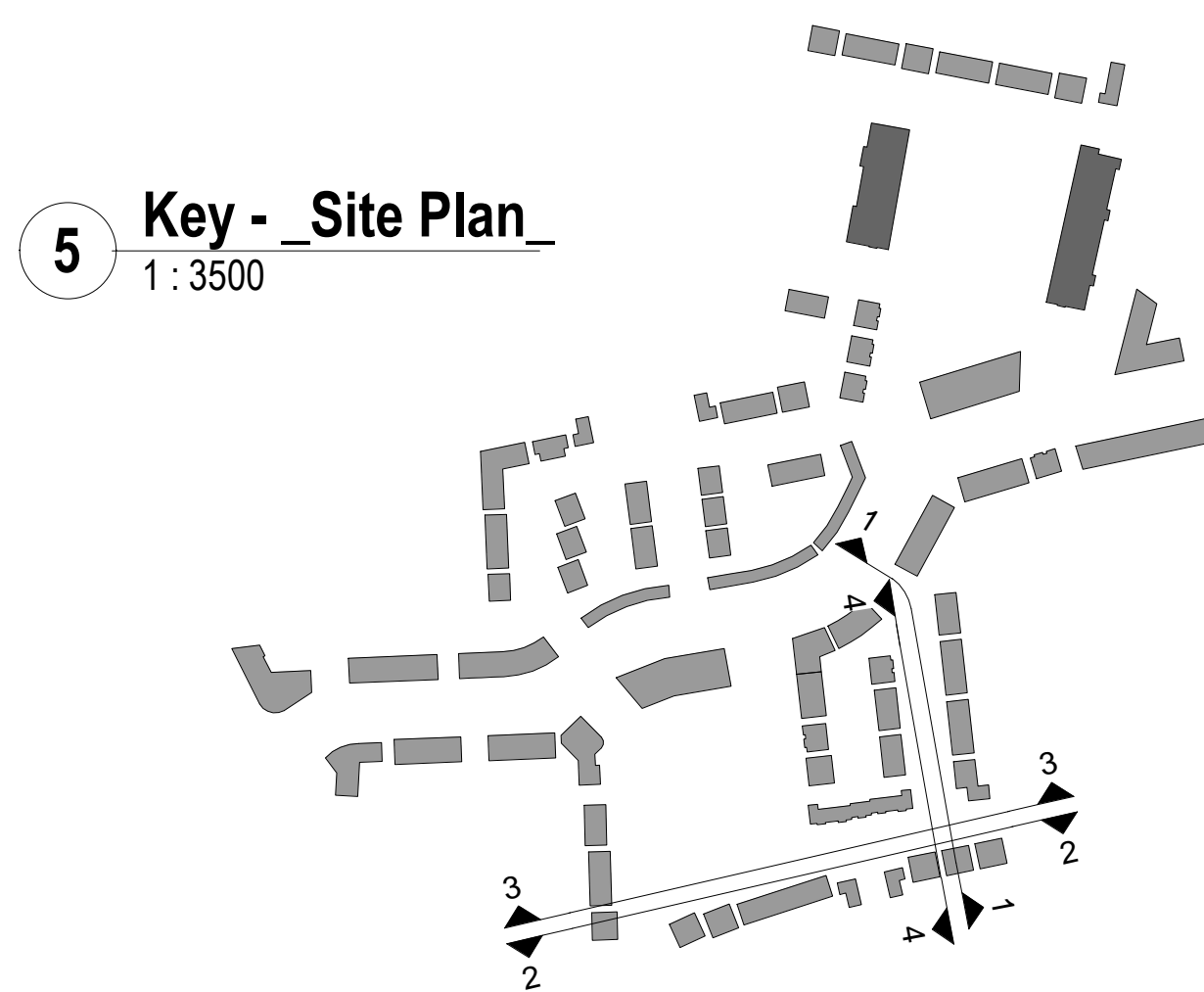
1 Clonminch Drive (East)
1:200



2 Clonminch Drive (South)
1:200



3 Clonminch Drive (North)
1:200



5 Key - Site Plan
1:3500



4 Clonminch Drive (West) Part 01
1:200

CPR Note:
All works to be carried out using proper materials which are fit for the use they are intended and for the condition in which they are to be used.
All materials used in connection with the works to comply with the Construction Products Regulation (EU) No. 305/2011 and the harmonised technical specifications/standards that fall within the remit of the CPR No. 305/2011.



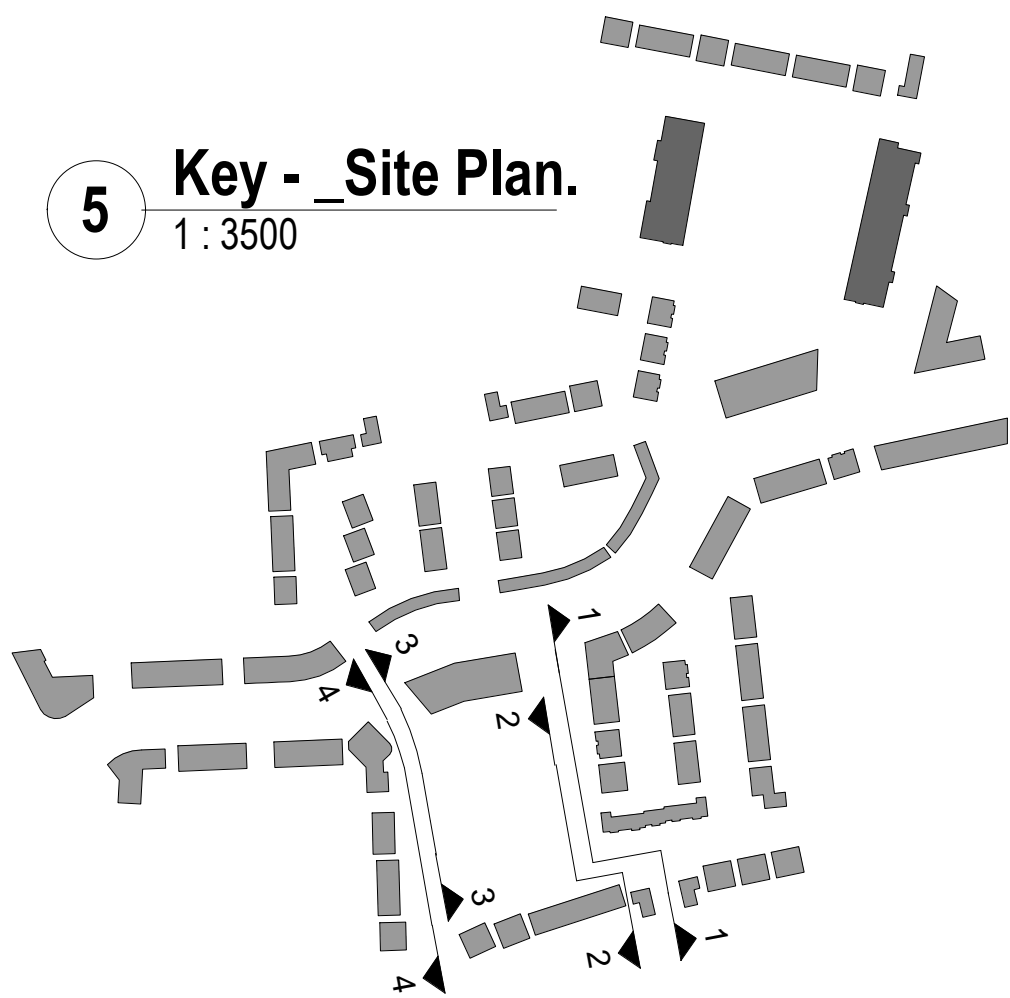
van Dijk Architects
HILL HOUSE, MILL STREET, DUNDALK, CO. DUBLIN
PH: 046-2755440 FAX: 046-2755440
INFO@VANDIJKARCHITECTS.COM

DRAWING TITLE					
CLONMINCH DRIVE ELEVATIONS					
DATE	17/07/2021	BY	AC	1	CLONMINCH
PROJ	1757-PA-012	CLIENT	STEINERT INVESTMENTS		
REV	01	DATE	18/10/2021		

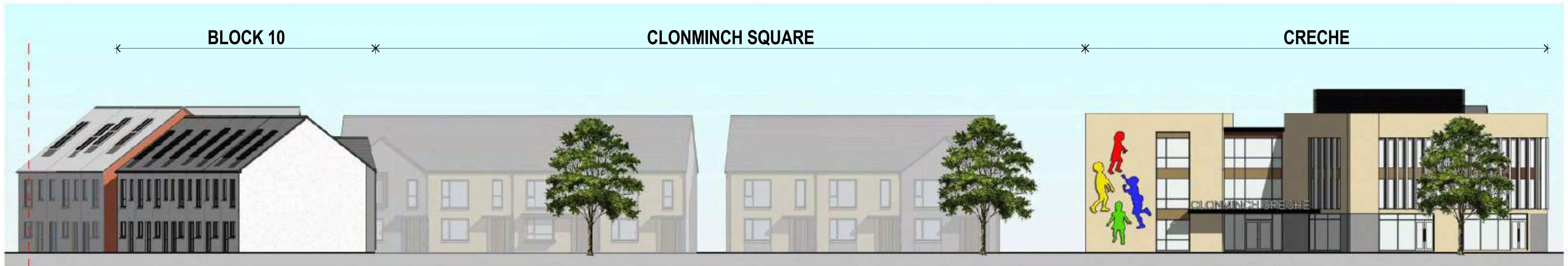
© 2021 van Dijk Architects. All rights reserved. This drawing is the property of van Dijk Architects. It may not be reproduced, stored in a retrieval system, or transmitted in any form or by any means, electronic, mechanical, photocopying, recording, or by any information storage and retrieval system, without the prior written permission of van Dijk Architects.



1 Clonminch Square (East)
1 : 200



5 Key - Site Plan.
1 : 3500



2 Clonminch Square (West)
1 : 200



3 Clonminch Drive (East) Part 01
1 : 200



4 Clonminch Drive (West) Part 01
1 : 200

CPR Note:
All works to be carried out using proper materials which are fit for the use they are intended and for the condition in which they are to be used.

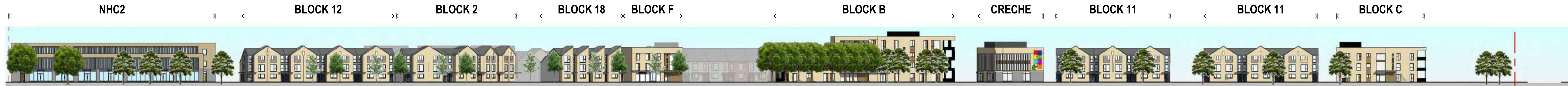
All materials used in connection with the works to comply with the Construction Products Regulation (EU) No. 305/2011 and the harmonised technical specification/standards that fall within the remit of the CPR No. 305/2011



DRAWING TITLE
CLONMINCH SQUARE ELEVATIONS

SCALE	VARIABLES	DRAWING NUMBER	757-PA-013	JOB	CLONMINCH
REVISION	SIZE	CAD REFERENCE		CLIENT	STEINFORT INVESTMENTS
REVISED BY	BG	DRAWING BY	AC	DATE	18.10.2021

NOTE
IF CURED DIMENSIONS MUST BE USED IN PREFERENCE TO SCALE DIMENSIONS. ANY DIMENSIONAL DISCREPANCIES MUST BE REPORTED TO THE ARCHITECT IMMEDIATELY. THIS DRAWING REMAINS THE COPYRIGHT OF VAN DIJK ARCHITECTS. IT MUST NOT BE USED FOR ANY PURPOSE BUILDING OR OTHERWISE WITHOUT THE EXPRESSED PERMISSION OF THIS PRACTICE. DO NOT COPY OR REDISTRIBUTE THESE DRAWINGS OR ANY ADDITIONAL INFORMATION WITHOUT THE EXPRESSED APPROVAL OF vanDijk Architects



1 Section A-A
1 : 500



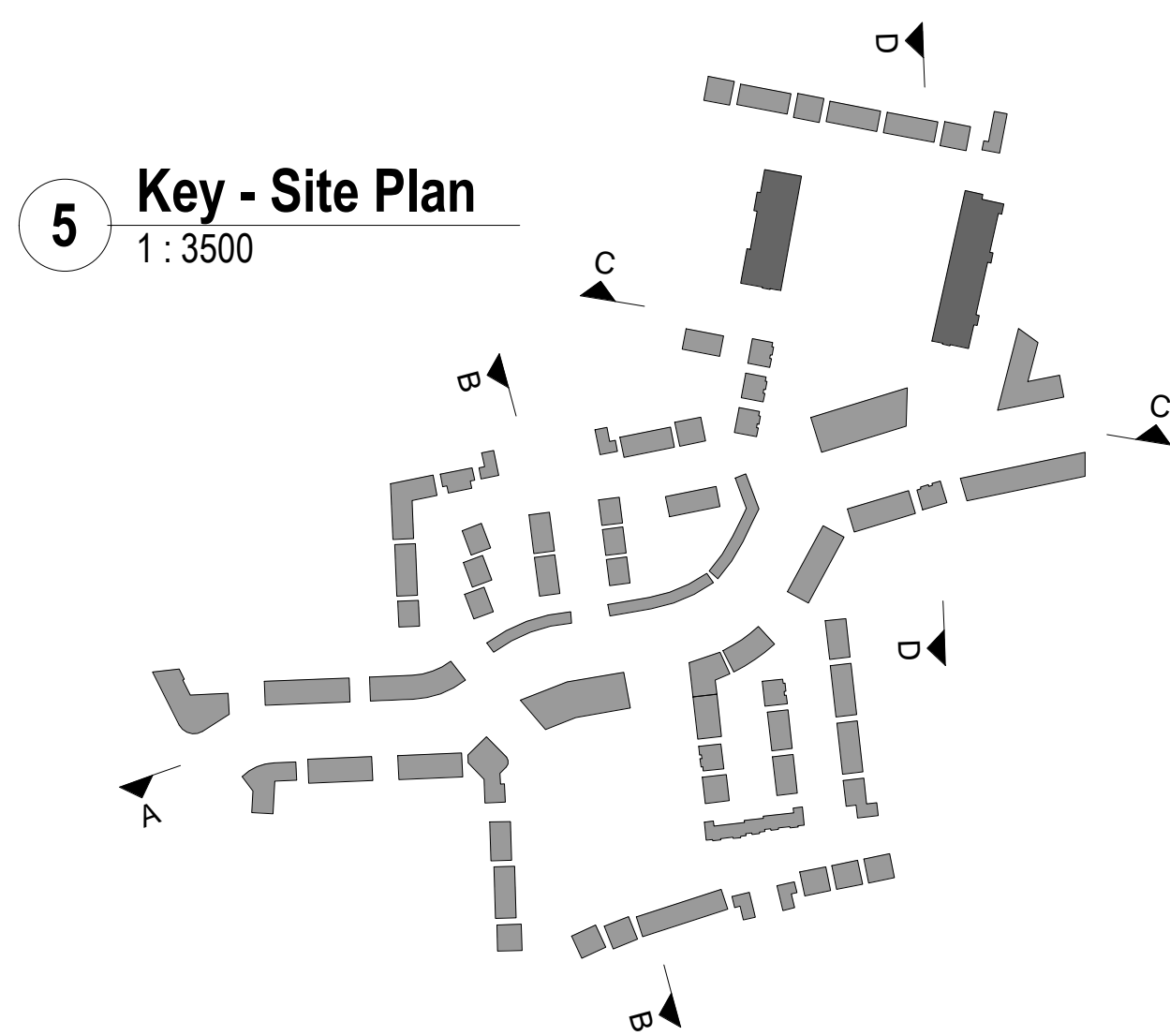
2 Section B-B
1 : 250



3 Section C-C
1 : 250



4 Section D-D
1 : 250

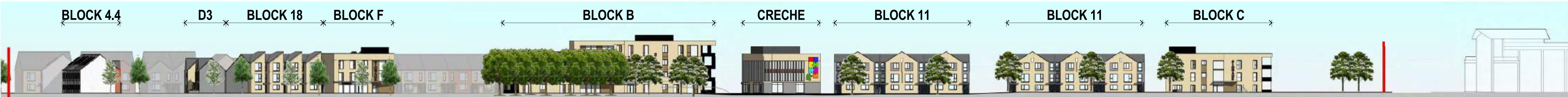


5 Key - Site Plan
1 : 3500

CPR Note:
All works to be carried out using proper materials which are fit for the use they are intended and for the condition in which they are to be used.
All materials used in connection with the works to comply with the Construction Products Regulation (EU) No. 305/2011 and the harmonised technical specifications/standards that fall within the remit of the CPR No. 305/2011.



DRAWING TITLE					
SITE SECTIONS OVERALL					
NAME	PROJECT	DATE	BY	CHECKED	DATE
van Dijk Architects	1767-PA-016	18.10.2021	AC	AC	18.10.2021
PROJ	1767-PA-016	18.10.2021	AC	AC	18.10.2021
REV	1	18.10.2021	AC	AC	18.10.2021



1 Site Section A-A
1 : 500

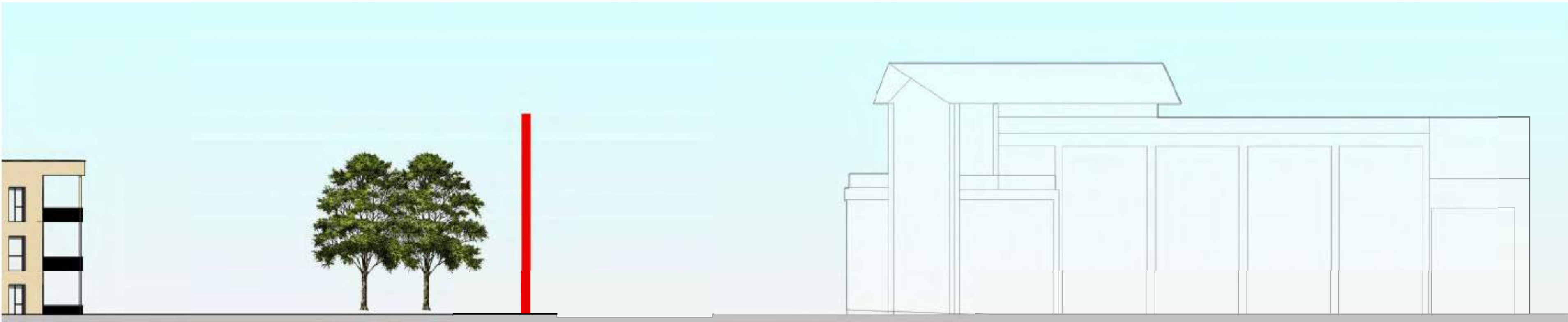
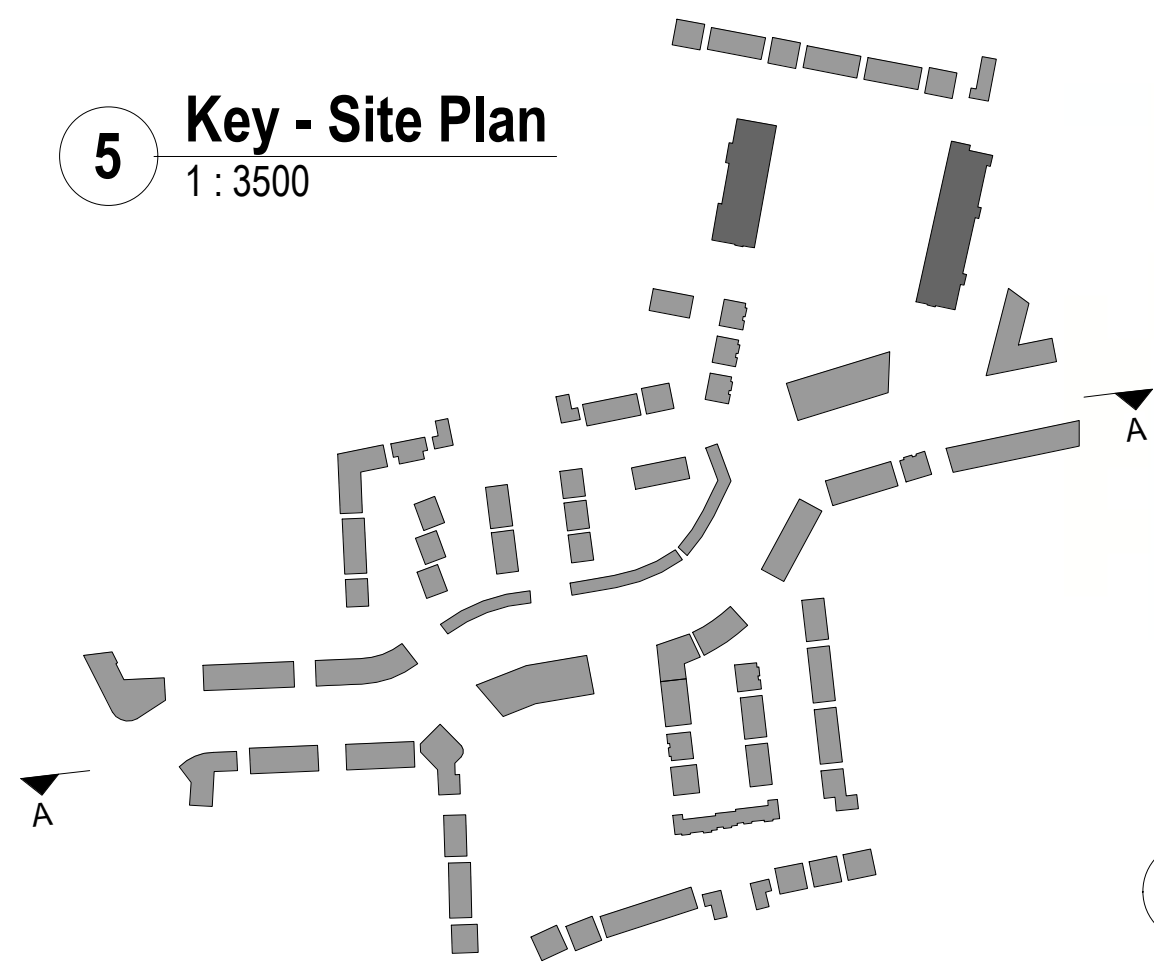


2 Site Section A-A Part 01
1 : 200



3 Site Section A-A Part 02
1 : 200

5 Key - Site Plan
1 : 3500



4 Site Section A-A Part 03
1 : 200

CPR Note:
All works to be carried out using proper materials which are fit for the use they are intended and for the condition in which they are to be used.

All materials used in connection with the works to comply with the Construction Products Regulation (EU) No. 305/2011 and the harmonised technical specification/standards that fall within the remit of the CPR No. 305/2011



DRAWING TITLE
SITE SECTION A-A

SCALE	VARIES	DRAWING NUMBER	1757-PA-015	JOB	CLONMINGH
REVISION	SIZE	CAD REFERENCE		CLIENT	STEINFORT INVESTMENTS
REVISED BY	BG	DRAWING BY	AC	DATE	18.10.2021

NOTE
If scaled dimensions must be used in preference to scaled dimensions, any dimensional discrepancies must be reported to the architect immediately. This drawing remains the copyright of van Dijk Architects. It must not be used for any purpose beyond the intended use of this practice. Do not copy or redistribute these drawings or any additional information without the expressed approval of van Dijk Architects



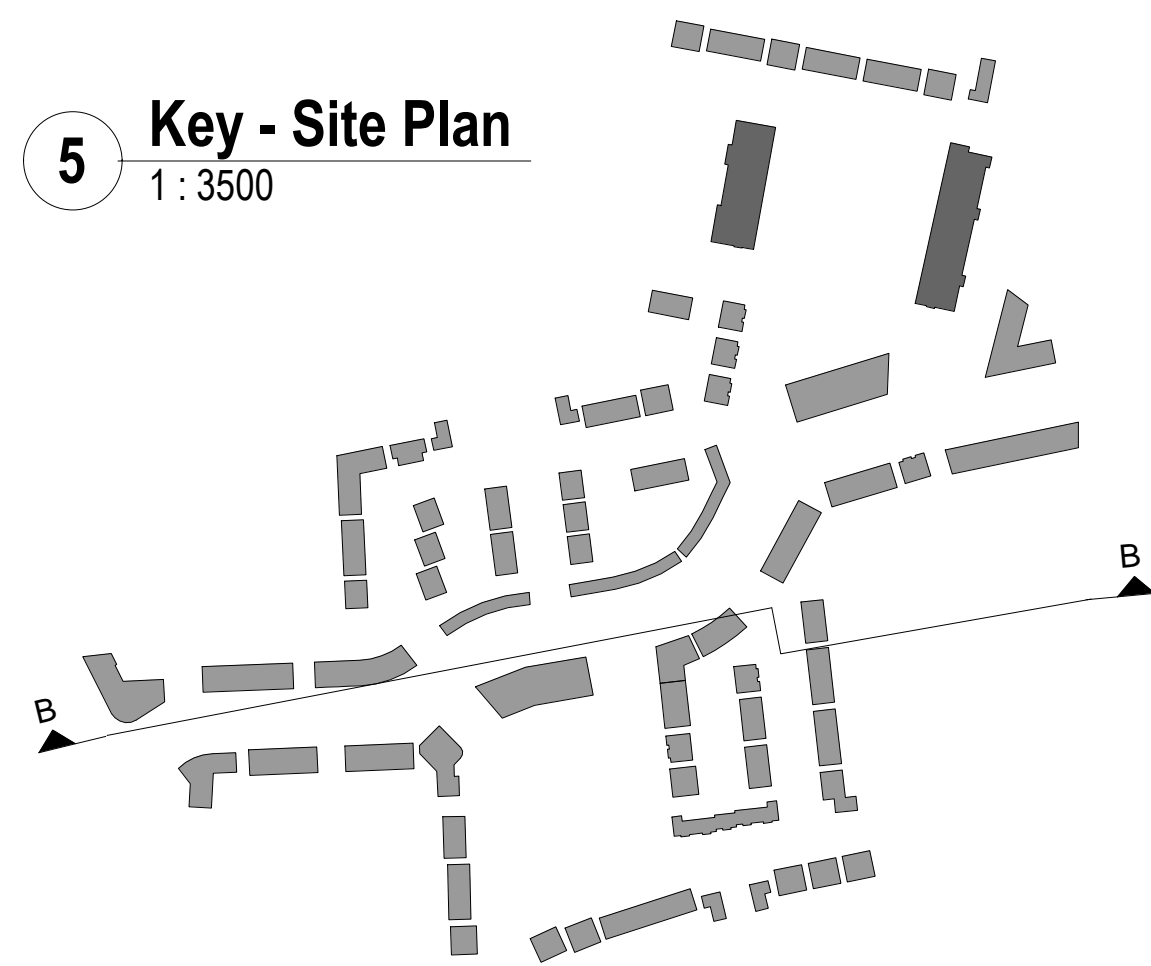
1 Site Section B-B
1 : 500



2 Site Section B-B Part 01
1 : 200



3 Site Section B-B Part 02
1 : 200



5 Key - Site Plan
1 : 3500



4 Site Section B-B Part 03
1 : 200

CPR Note:
All works to be carried out using proper materials which are fit for the use they are intended and for the condition in which they are to be used.

All materials used in connection with the works to comply with the Construction Products Regulation (EU) No. 305/2011 and the harmonised technical specification/standards that fall within the remit of the CPR No. 305/2011



van Dijk Architects
MILL HOUSE, MILL STREET, DUNDALK, CO. LOUTH
PH. 042-9354466 FAX. 042-9354460
INFO@VANDIJKARCHITECTS.COM

DRAWING TITLE
SITE SECTION B-B

SCALE	VARIABLES	DRAWING NUMBER	757-PA-016	JOB	CLONMINGH
REVISION	SIZE	CAD REFERENCE		CLIENT	STEINFORT INVESTMENTS
REVISED BY	BG	DRAWING BY	AC	DATE	18.10.2021

NOTE:
If scaled dimensions must be used in preference to scaled dimensions, any dimensional discrepancies must be reported to the architect immediately. This drawing remains the copyright of van Dijk Architects. It must not be used for any purpose beyond the intended use of this practice. No part of this drawing may be reproduced or distributed in any form or by any means without the expressed approval of van Dijk Architects.



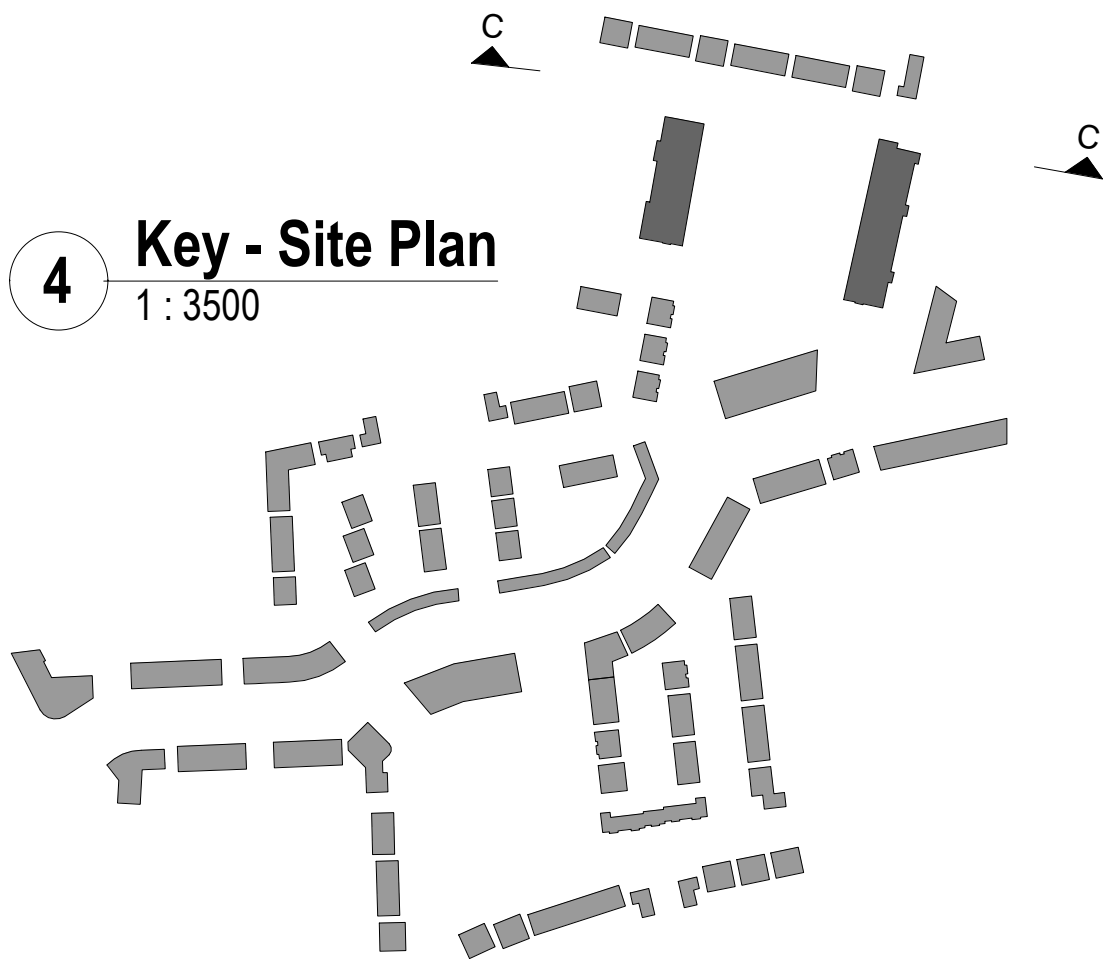
1 Site Section C-C
1 : 500



2 Site Section C-C Part 01
1 : 200



3 Site Section C-C Part 02
1 : 200



4 Key - Site Plan
1 : 3500

CPR Note:
All works to be carried out using proper materials which are fit for the use they are intended and for the condition in which they are to be used.

All materials used in connection with the works to comply with the Construction Products Regulation (EU) No. 305/2011 and the harmonised technical specification/standards that fall within the remit of the CPR No. 305/2011



van Dijk Architects
MILL HOUSE, MILL STREET, DUNDALK, CO. LOUTH
PH. 042-9354466 FAX. 042-9354460
INFO@VANDIJKARCHITECTS.COM

DRAWING TITLE
SITE SECTION C-C

SCALE	VARIES	DRAWING NUMBER	1757-PA-017	JOB	CLONMINGH
REVISION	SIZE	CAD REFERENCE		CLIENT	STEINFORT INVESTMENTS
REVISED BY	BG	DRAWING BY	AC	DATE	18.10.2021

NOTE
If scaled dimensions must be used in preference to scaled dimensions, any dimensional discrepancies must be reported to the architect immediately. This drawing remains the copyright of van Dijk Architects. It must not be used for any purpose beyond that for which it was prepared without the express permission of van Dijk Architects. Do not copy or redistribute these drawings or any additional information without the express approval of van Dijk Architects



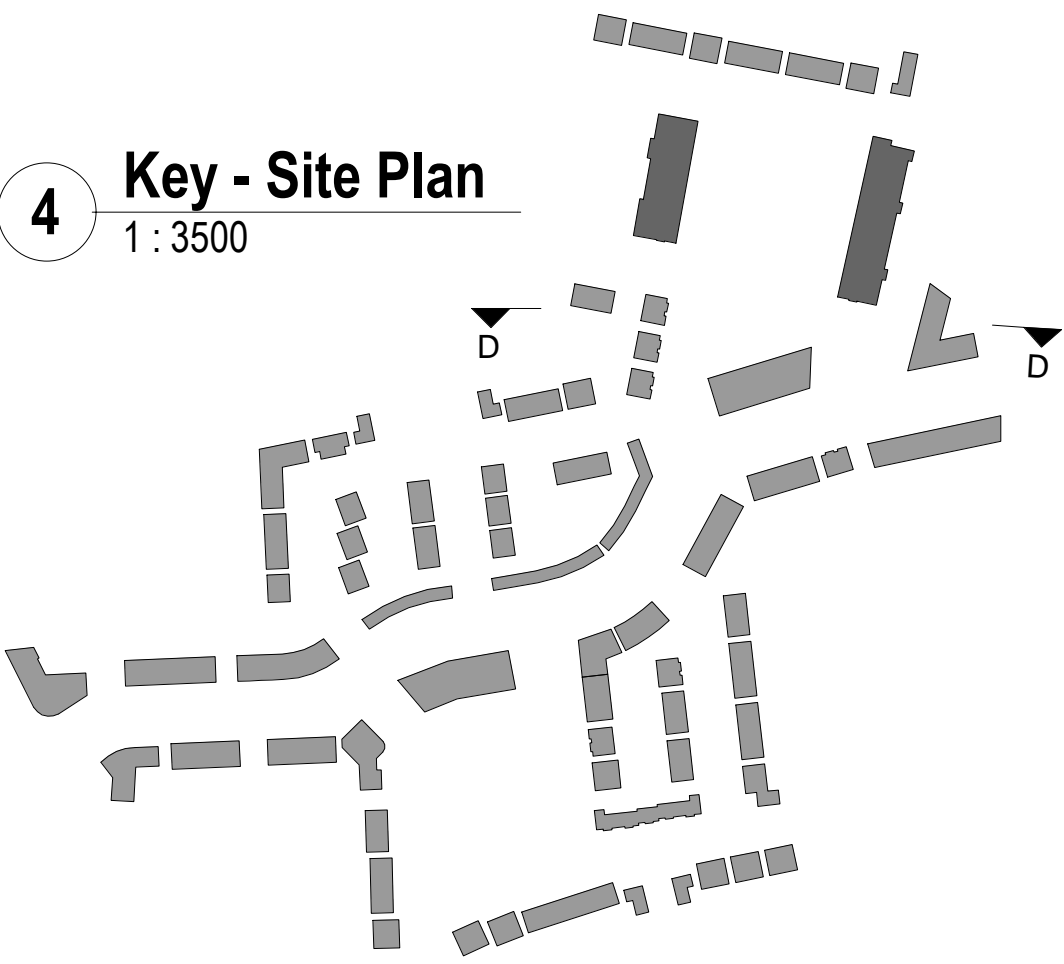
1 Site Section D-D
1 : 600



2 Site Section D-D Part 01
1 : 200



3 Site Section D-D Part 02
1 : 200



4 Key - Site Plan
1 : 3500

CPR Note:
All works to be carried out using proper materials which are fit for the use they are intended and for the condition in which they are to be used.

All materials used in connection with the works to comply with the Construction Products Regulation (EU) No. 305/2011 and the harmonised technical specification/standards that fall within the remit of the CPR No. 305/2011



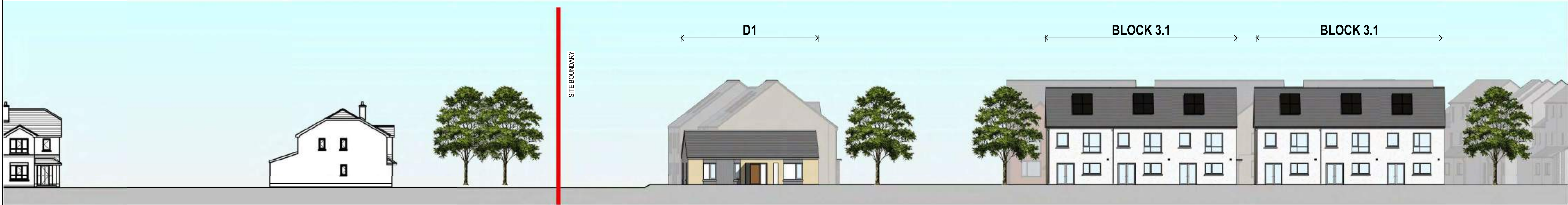
DRAWING TITLE
SITE SECTION D-D

SCALE	VARIABLES	DRAWING NUMBER	1757-PA-018	JOB	CLONMINGH
REVISION	SIZE	CAD REFERENCE		CLIENT	STEINFORT INVESTMENTS
REVISED BY	BG	DRAWING BY	AC	DATE	18.10.2021

NOTE
If scaled dimensions must be used in preference to scale dimensions, any dimensional discrepancies must be reported to the architect immediately. This drawing remains the copyright of van Dijk Architects. It must not be used for any purpose beyond the intended use of this drawing. No part of this drawing may be reproduced or distributed in any form or by any means without the expressed approval of van Dijk Architects.



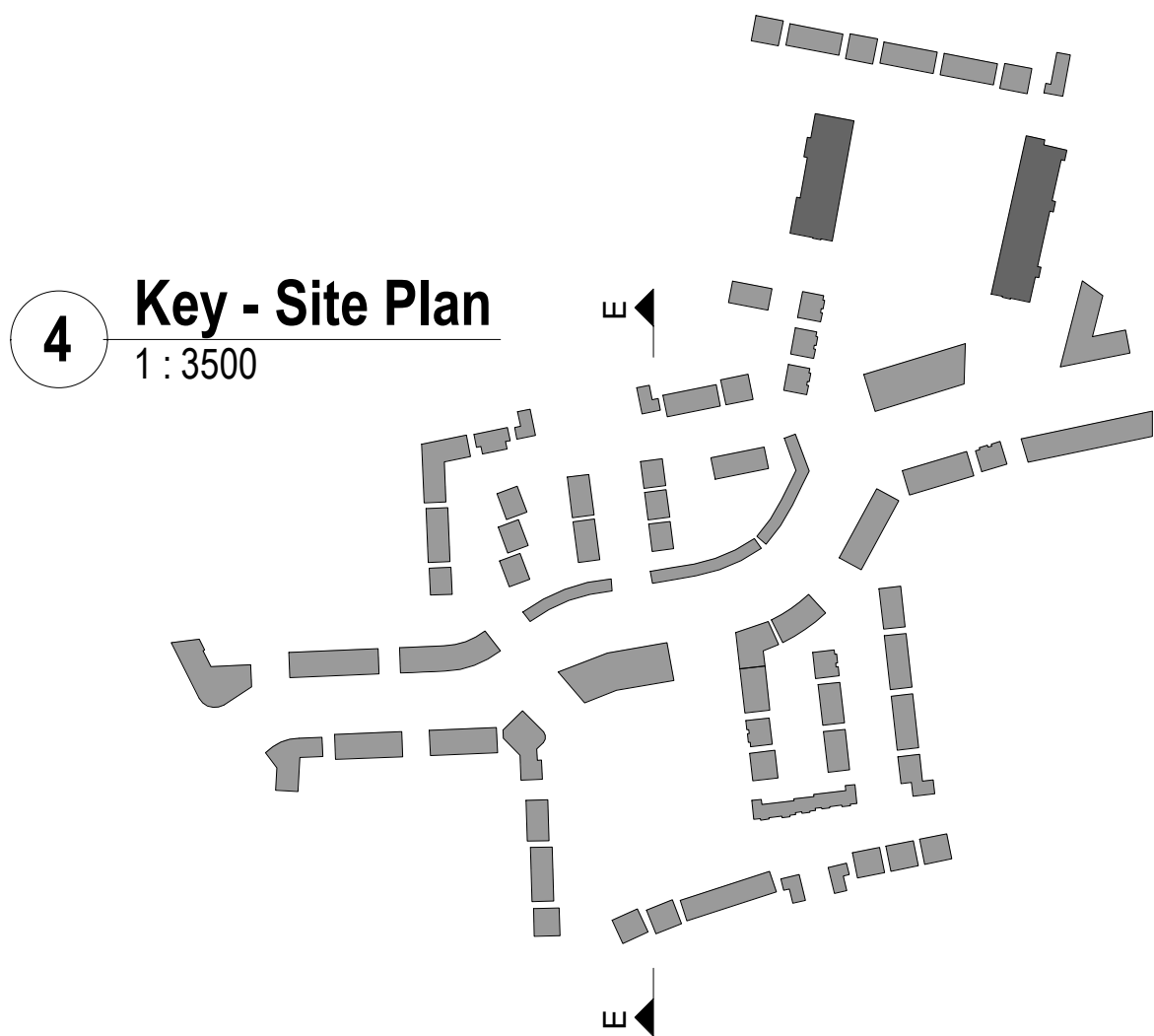
1 Site Section E-E
1 : 500



2 Site Section E-E Part 01
1 : 200



3 Site Section E-E Part 02
1 : 200



4 Key - Site Plan
1 : 3500

CPR Note:
All works to be carried out using proper materials which are fit for the use they are intended and for the condition in which they are to be used.

All materials used in connection with the works to comply with the Construction Products Regulation (EU) No. 305/2011 and the harmonised technical specification/standards that fall within the remit of the CPR No. 305/2011



van Dijk Architects
MILL HOUSE, MILL STREET, DUNDALK, CO. LOUTH
PH. 042-9354466 FAX. 042-9354460
INFO@VANDIJKARCHITECTS.COM

DRAWING TITLE
SITE SECTION E-E

SCALE	VARIABLES	DRAWING NUMBER	757-PA-019	JOB	CLONMINGH
REVISION	SIZE	CAD REFERENCE		CLIENT	STEINFORT INVESTMENTS
REVISED BY	BG	DRAWING DATE	AC	DATE	18.10.2021

NOTE
IF PLANNED DIMENSIONS MUST BE USED IN PREFERENCE TO SCALE DIMENSIONS, ANY DIMENSIONAL DISCREPANCIES MUST BE REPORTED TO THE ARCHITECT IMMEDIATELY. THIS DRAWING REMAINS THE COPYRIGHT OF VAN DIJK ARCHITECTS. IT MUST NOT BE USED FOR ANY PURPOSE BEYOND THAT FOR WHICH IT WAS PREPARED WITHOUT THE EXPRESSED APPROVAL OF VAN DIJK ARCHITECTS. THESE DRAWINGS OR ANY ADDITIONAL INFORMATION WITHOUT THE EXPRESSED APPROVAL OF VAN DIJK ARCHITECTS