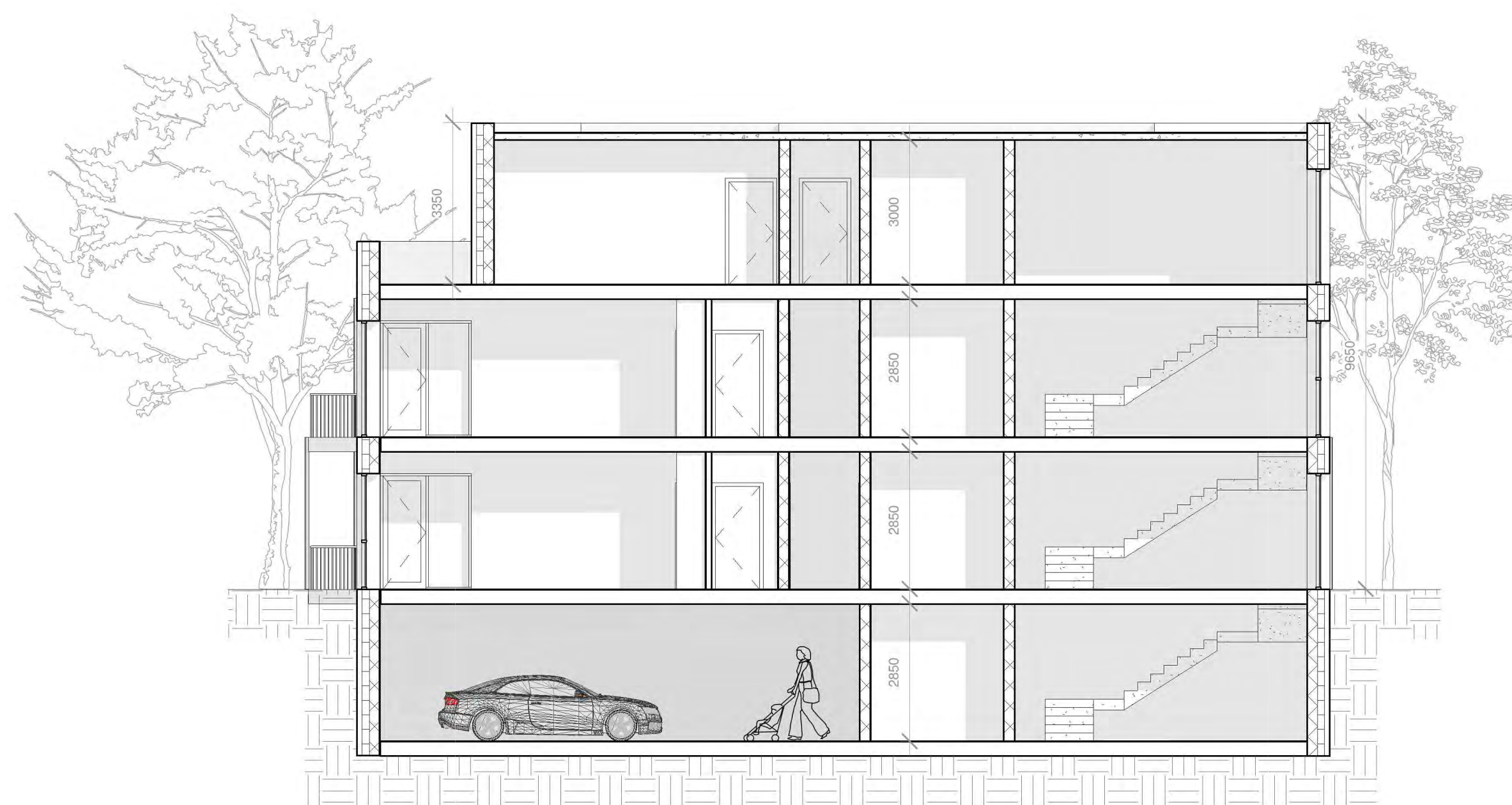


1 Building Section 1
1 : 100



3 Building Section 2
1 : 100



2 3D View 1..

REV NR	ISSUED BY	REV. DESCRIPTION	REV. DATE
--------	-----------	------------------	-----------

CPI NOTE:
ALL WORKS TO BE CARRIED OUT USING PROPER MATERIALS WHICH ARE FIT FOR THE USE THEY ARE INTENDED AND FOR THE
CONDITIONS IN WHICH THEY ARE TO BE USED. ALL MATERIALS USED IN CONNECTION WITH THE WORKS TO COMPLY WITH THE
CONSTRUCTION PRODUCTS REGULATION (EU) NO. 305/2011 AND THE HARMONISED TECHNICAL SPECIFICATIONS/STANDARDS THAT
FALL WITHIN THE SCOPE OF THE CPI NO. 305/2011

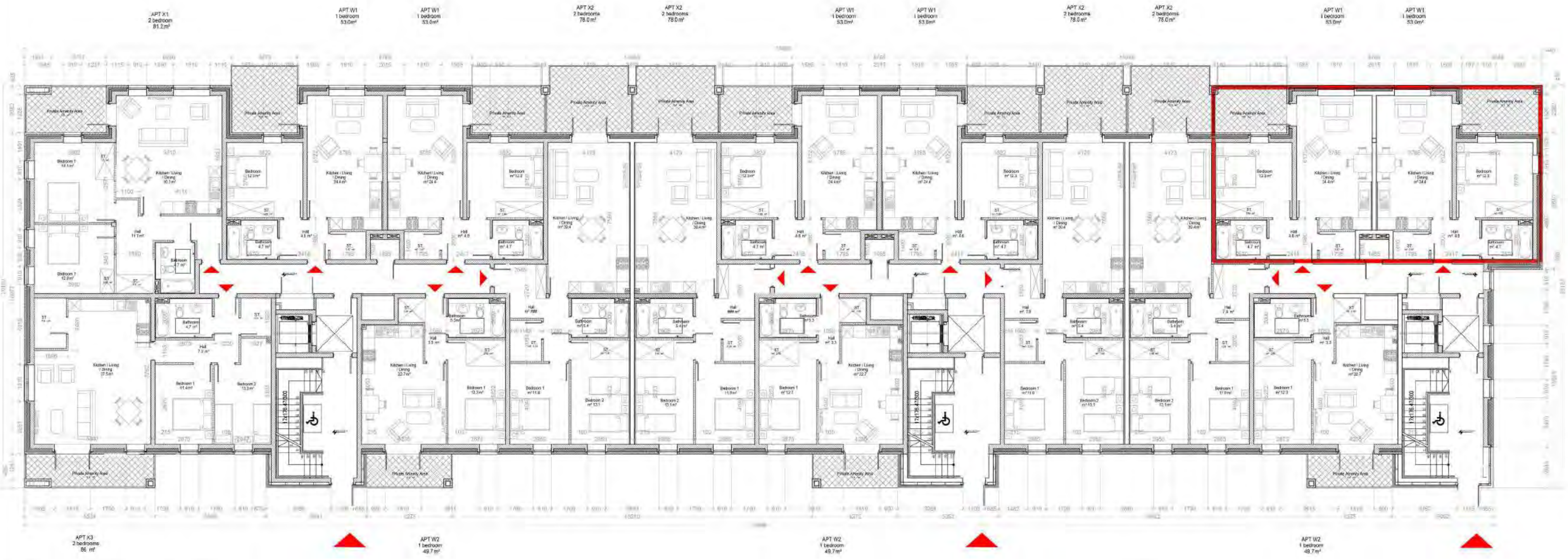


van Dijk Architects
MILL HOUSE, MILL STREET, DUNDALK, CO. DUBLIN
PH. 042-9354466 FAX. 042-9354460
INFO@VANDIJKARCHITECTS.COM

DRAWING TITLE
Part V - Block D- 4 Units - Sections

SCALE 1 : 100	DRAWING NUMBER 1767-PA-059	JOB CLONMINTCH, TULLAMORE
REVISION A1	MODEL STATUS	CLIENT STEINFORT INVESTMENTS
REVISED BY FD	DRAWING BY FD	DATE July 2021

NOTE
FIGURED DIMENSIONS MUST BE USED IN PREFERENCE TO SCALED DIMENSIONS. ANY DIMENSIONAL DISCREPANCIES MUST BE
REPORTED TO THE ARCHITECT IMMEDIATELY. THIS DRAWING REMAINS THE COPYRIGHT OF VAN DIJK ARCHITECTS. IT MUST NOT
BE USED FOR ANY PURPOSES OTHER THAN THE EXPLICIT PURPOSE OF THIS PRACTICE. DO NOT COPY OR
REPRODUCE THESE DRAWINGS OR ANY ADDITIONAL INFORMATION WITHOUT THE EXPRESSED APPROVAL OF vanDijk Architects



Block E -Ground Floor Plan
1:100

Apt. W1 (10m) - 4 no. Part V units						
Quality Housing for Sustainable Communities space provision						
Apartment	Dwelling Type	Gross Floor Area	Aggregate living area	Aggregate bedroom area	Storage	Private Amenity Space
Target	1 Bed 2 nd Apart.	45 m ²	23 m ²	11.4 m ²	3 m ²	5 m ²
Proposed W1	1 Bed 2 nd Apart.	53 m ²	24.4 m ²	12.3 m ²	4.38 m ²	11.71 m ²

Apt. W2 (8m)						
Quality Housing for Sustainable Communities space provision						
Apartment	Dwelling Type	Gross Floor Area	Aggregate living area	Aggregate bedroom area	Storage	Private Amenity Space
Target	1 Bed 2 nd Apart.	45 m ²	23 m ²	11.4 m ²	3 m ²	5 m ²
Proposed W2	1 Bed 2 nd Apart.	49.5 m ²	22.7 m ²	12.3 m ²	4.14 m ²	6.77 m ²

Apt. W3 (2m)						
Quality Housing for Sustainable Communities space provision						
Apartment	Dwelling Type	Gross Floor Area	Aggregate living area	Aggregate bedroom area	Storage	Private Amenity Space
Target	1 Bed 2 nd Apart.	45 m ²	23 m ²	11.4 m ²	3 m ²	5 m ²
Proposed W3	1 Bed 2 nd Apart.	55.2 m ²	25.2 m ²	11.8 m ²	3.2 m ²	20 m ²

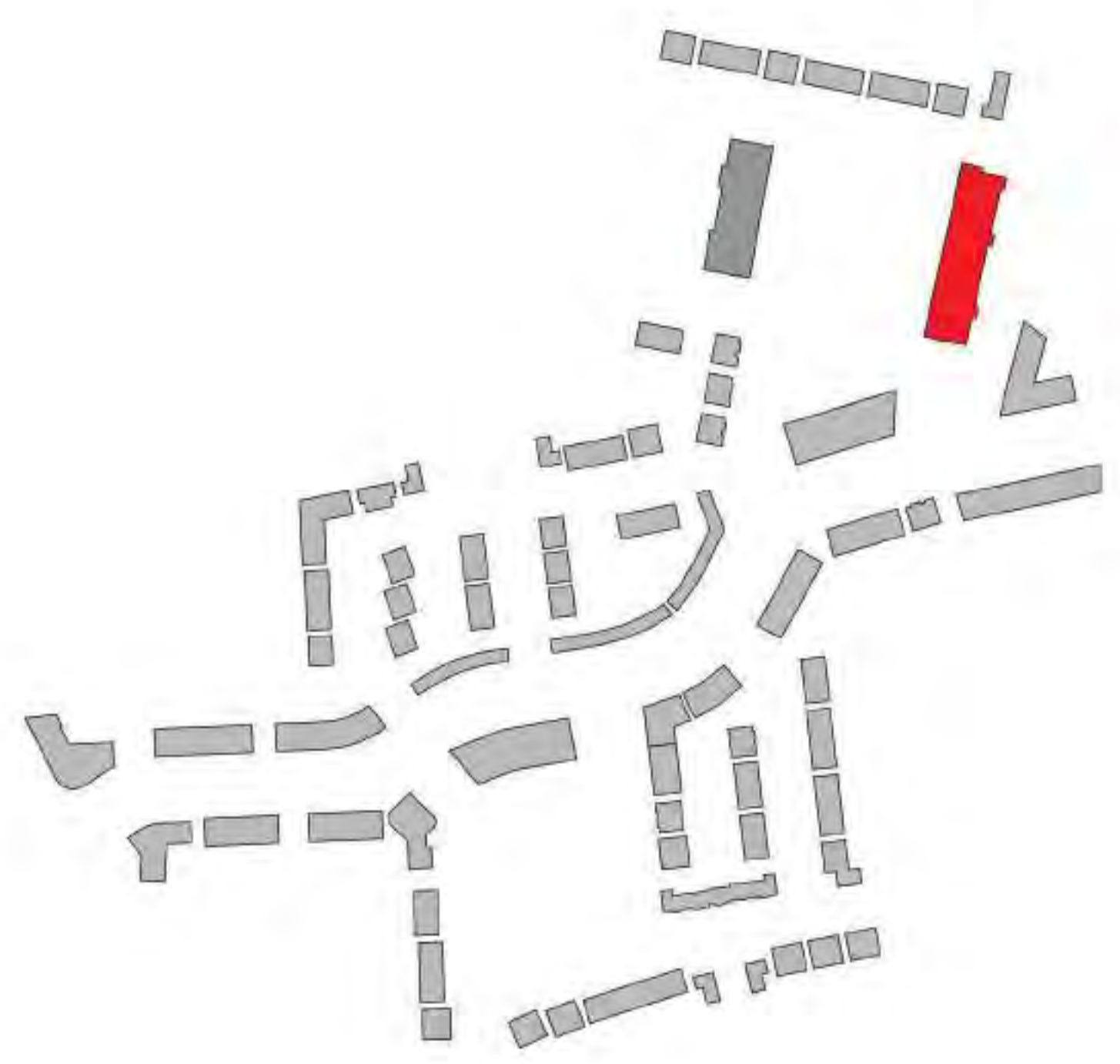
Apt. X1 (2m)						
Quality Housing for Sustainable Communities space provision						
Apartment	Dwelling Type	Gross Floor Area	Aggregate living area	Aggregate bedroom area	Storage	Private Amenity Space
Target	2 Bed 4 th Apart.	74 m ²	30 m ²	24.4 m ²	6 m ²	6 m ²
Proposed X1	2 Bed 4 th Apart.	81.2 m ²	30.3 m ²	26.9 m ²	6.9 m ²	8.8 m ²

Apt. X2 (12m)						
Quality Housing for Sustainable Communities space provision						
Apartment	Dwelling Type	Gross Floor Area	Aggregate living area	Aggregate bedroom area	Storage	Private Amenity Space
Target	2 Bed 4 th Apart.	74 m ²	30 m ²	24.4 m ²	6 m ²	6 m ²
Proposed X2	2 Bed 4 th Apart.	76 m ²	30.4 m ²	25 m ²	6.05 m ²	9.67 m ²

Apt. X3 (2m)						
Quality Housing for Sustainable Communities space provision						
Apartment	Dwelling Type	Gross Floor Area	Aggregate living area	Aggregate bedroom area	Storage	Private Amenity Space
Target	2 Bed 4 th Apart.	74 m ²	30 m ²	24.4 m ²	6 m ²	6 m ²
Proposed X3	2 Bed 4 th Apart.	86 m ²	37.5 m ²	24.6 m ²	6.88 m ²	9.8 m ²

Apt. Y1 (2m)						
Quality Housing for Sustainable Communities space provision						
Apartment	Dwelling Type	Gross Floor Area	Aggregate living area	Aggregate bedroom area	Storage	Private Amenity Space
Target	3 Bed 6 th Apart.	90 m ²	34 m ²	31.5 m ²	9 m ²	9 m ²
Proposed Y1	3 Bed 6 th Apart.	110 m ²	36.3 m ²	40.8 m ²	10.9 m ²	80 m ²

Apt. Y2 (2m)						
Quality Housing for Sustainable Communities space provision						
Apartment	Dwelling Type	Gross Floor Area	Aggregate living area	Aggregate bedroom area	Storage	Private Amenity Space
Target	3 Bed 6 th Apart.	93 m ²	34 m ²	31.5 m ²	9 m ²	9 m ²
Proposed Y2	3 Bed 6 th Apart.	115.8 m ²	40 m ²	44 m ²	13 m ²	49 m ²



CPR Note:
All works to be carried out using proper materials which are fit for the use they are intended and for the condition in which they are to be used.

All materials used in connection with the works to comply with the Construction Products Regulation (EU) No 305/2011 and the harmonised technical specifications/standards that fall within the remit of the CPR No. 305/2011

van Dijk Architects
MILWAUKEE, WISCONSIN
TEL: 414-249-5646 FAX: 414-249-5646
INFO@VANDIJKARCHITECTS.COM

Part V - Block E - 2 Units - Ground Floor			
DATE	1757-PA-060	BY	CEMPHICH TILLMERE
DATE	1757-PA-060	BY	STEVEN INVESTMENTS
DATE	AC	BY	July 2021

*This drawing is the property of van Dijk Architects. It is to be used for the purpose of the project only and is not to be reproduced, stored in a retrieval system, or transmitted in any form or by any means, electronic, mechanical, photocopying, recording, or by any information storage and retrieval system, without the prior written permission of van Dijk Architects.



Block E -First Floor Plan

1:100

Appt W1 (8nos) - 4 no. Part V units

Quality Housing for Sustainable Communities space provision						
Apartment	Dwelling Type	Gross Floor Area	Aggregate living area	Aggregate bedroom area	Storage	Private Amenity Space
Target	1 Bed 2 nd Apart.	45 m ²	23 m ²	11.4 m ²	3 m ²	5 m ²
Proposed W1	1 Bed 2 nd Apart.	53 m ²	24.4 m ²	12.3 m ²	4.36 m ²	11.71 m ²

Appt W2 (2nos)

Quality Housing for Sustainable Communities space provision						
Apartment	Dwelling Type	Gross Floor Area	Aggregate living area	Aggregate bedroom area	Storage	Private Amenity Space
Target	1 Bed 2 nd Apart.	45 m ²	23 m ²	11.4 m ²	3 m ²	5 m ²
Proposed W2	1 Bed 2 nd Apart.	49.5 m ²	22.7 m ²	12.3 m ²	4.14 m ²	6.77 m ²

Appt W3 (2no)

Quality Housing for Sustainable Communities space provision						
Apartment	Dwelling Type	Gross Floor Area	Aggregate living area	Aggregate bedroom area	Storage	Private Amenity Space
Target	1 Bed 2 nd Apart.	45 m ²	23 m ²	11.4 m ²	3 m ²	5 m ²
Proposed W3	1 Bed 2 nd Apart.	55.2 m ²	25.2 m ²	11.6 m ²	3.2 m ²	20 m ²

Appt X1 (3nos)

Quality Housing for Sustainable Communities space provision						
Apartment	Dwelling Type	Gross Floor Area	Aggregate living area	Aggregate bedroom area	Storage	Private Amenity Space
Target	2 Bed 4 th Apart.	74 m ²	30 m ²	34.4 m ²	6 m ²	6 m ²
Proposed X1	2 Bed 4 th Apart.	81.2 m ²	30.3 m ²	26.8 m ²	6.8 m ²	8.8 m ²

Appt X2 (2nos)

Quality Housing for Sustainable Communities space provision						
Apartment	Dwelling Type	Gross Floor Area	Aggregate living area	Aggregate bedroom area	Storage	Private Amenity Space
Target	2 Bed 4 th Apart.	74 m ²	30 m ²	34.4 m ²	6 m ²	6 m ²
Proposed X2	2 Bed 4 th Apart.	78 m ²	30.4 m ²	25 m ²	6.05 m ²	9.87 m ²

Appt X3 (2no)

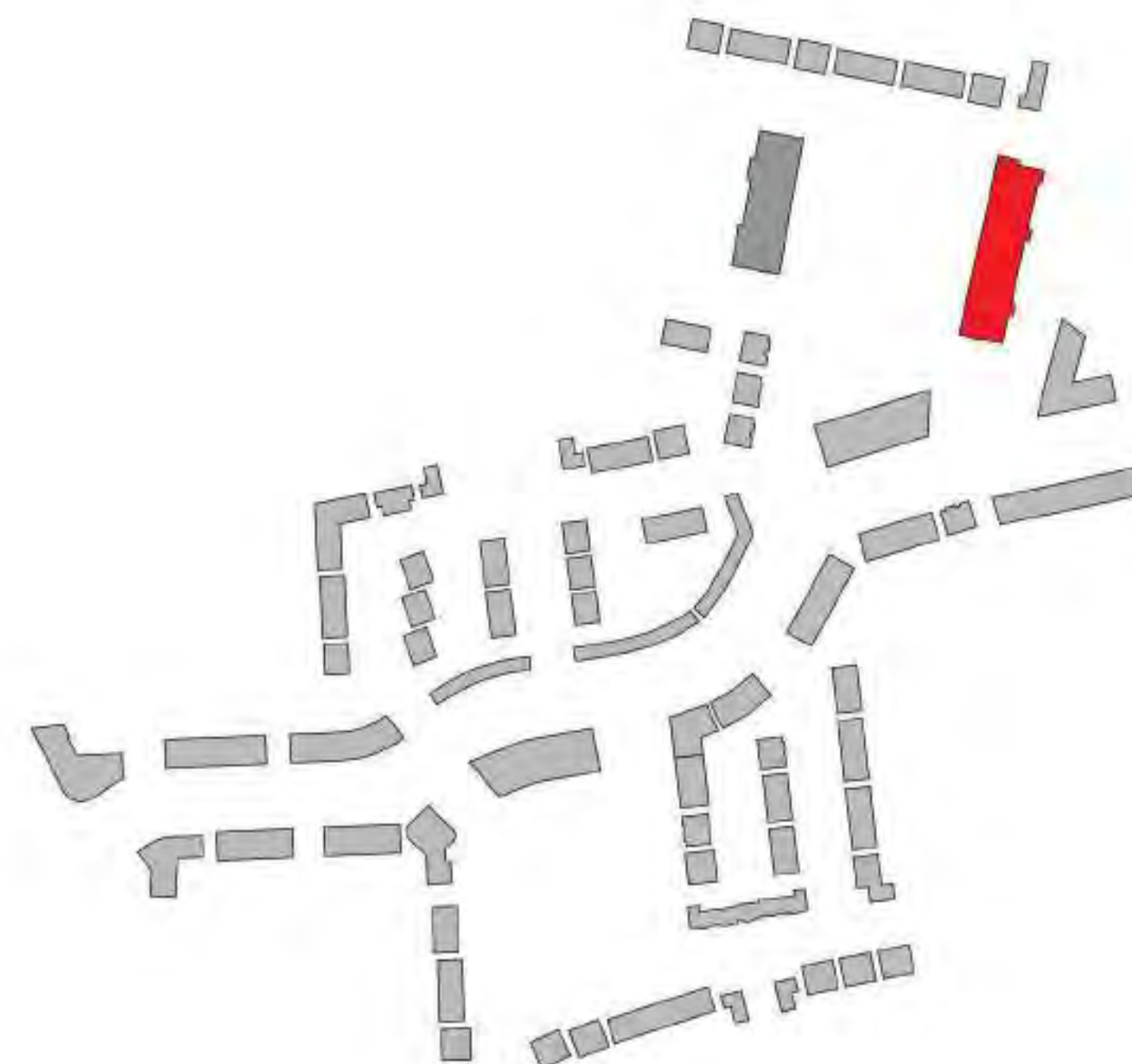
Quality Housing for Sustainable Communities space provision						
Apartment	Dwelling Type	Gross Floor Area	Aggregate living area	Aggregate bedroom area	Storage	Private Amenity Space
Target	2 Bed 4 th Apart.	74 m ²	30 m ²	34.4 m ²	6 m ²	6 m ²
Proposed X3	2 Bed 4 th Apart.	86 m ²	31.5 m ²	24.6 m ²	8.89 m ²	9.8 m ²

Appt Y1 (2no)

Quality Housing for Sustainable Communities space provision						
Apartment	Dwelling Type	Gross Floor Area	Aggregate living area	Aggregate bedroom area	Storage	Private Amenity Space
Target	3 Bed 6 th Apart.	90 m ²	34 m ²	31.5 m ²	9 m ²	9 m ²
Proposed Y1	3 Bed 6 th Apart.	110 m ²	36.3 m ²	40.6 m ²	10.9 m ²	90 m ²

Appt Y2 (2no)

Quality Housing for Sustainable Communities space provision						
Apartment	Dwelling Type	Gross Floor Area	Aggregate living area	Aggregate bedroom area	Storage	Private Amenity Space
Target	3 Bed 6 th Apart.	90 m ²	34 m ²	31.5 m ²	9 m ²	9 m ²
Proposed Y2	3 Bed 6 th Apart.	115.5 m ²	40 m ²	44 m ²	13 m ²	49 m ²



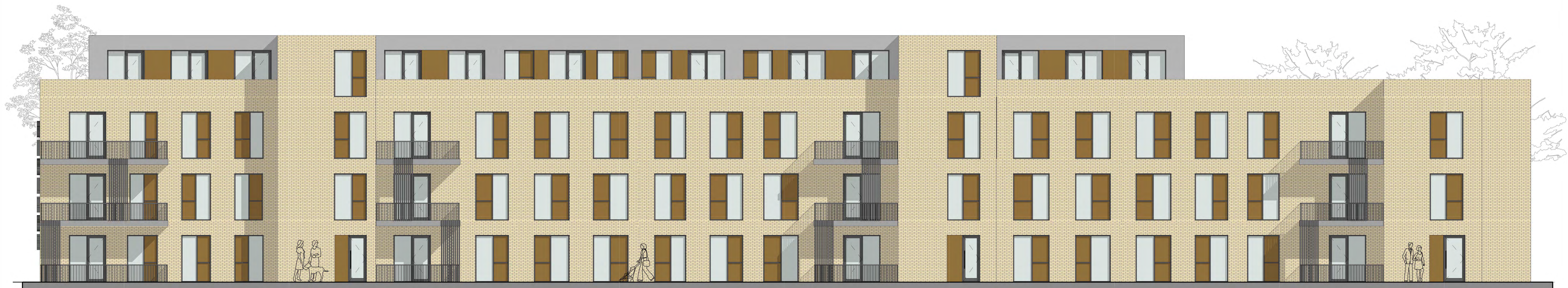
CPR Note:
All works to be carried out using proper materials which are fit for the use they are intended and for the condition in which they are to be used.
All materials used in connection with the works to comply with the Construction Products Regulation (EU) No 305/2011 and the harmonised technical specifications/standards that fall within the remit of the CPR No. 305/2011

van Dijk Architects
MILWAUKEE, WISCONSIN • DUBLIN, IRELAND
TEL: 01-234-5678 • FAX: 01-234-5678
INFO@VANDIJKARCHITECTS.COM

Part V - Block E - 2 Units - First Floor

AS INDICATED	1757-PA-061	BY	CEMPHICH TILLMERE
DATE	17/07/2021	DATE	17/07/2021
BY	AL	DATE	17/07/2021
BY	AL	DATE	17/07/2021

July 2021



1 Building Elevation A
1:100



2 Building Elevation B
1:100

4 no. Part V Units



3 Building Elevation C
1:100

4 no. Part V Units

4 Building Elevation D
1:100

HW/Aluminium Double
Glazed Window to be
Approved Design and
Specification

Straight Edged Coated
Aluminium Cill to Match
Window RAL Colour

Coloured Aluminium
Panel to be Approved
by the Architect

Selected Brick Finish
to Outer Leaf Brick
Type and Colour To
Be Approved By The
Architects

HW/Aluminium Double
Glazed Window to be
Approved Design and
Specification

Straight Edged Coated
Aluminium Cill to Match
Window RAL Colour

Coloured Aluminium
Panel to be Approved
by the Architect

Selected Brick Finish
to Outer Leaf Brick
Type and Colour To
Be Approved By The
Architects

REV NR	ISSUED BY	REV. DESCRIPTION	REV. DATE
--------	-----------	------------------	-----------

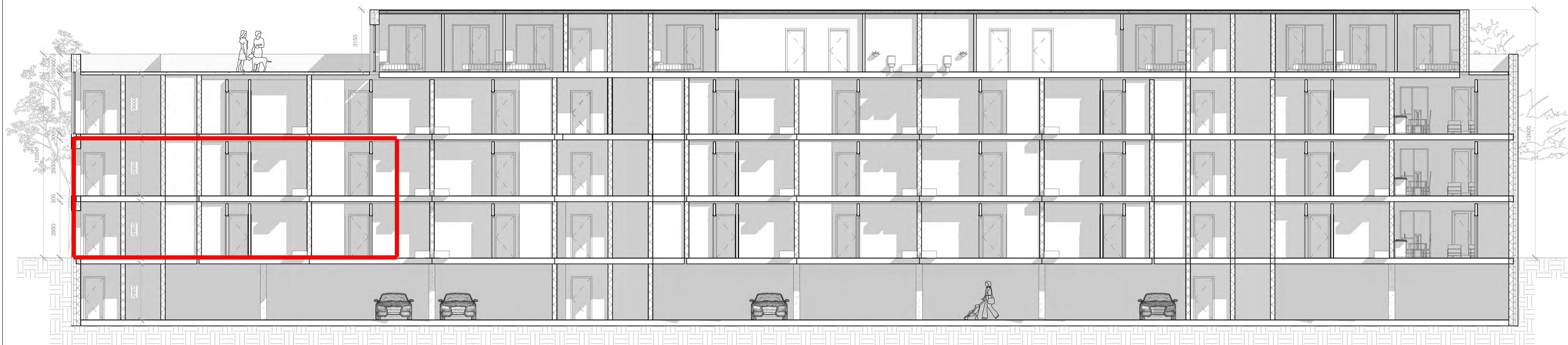
CPI NOTE:
ALL WORKS TO BE CARRIED OUT USING PROPER MATERIALS WHICH ARE FIT FOR THE USE THEY ARE INTENDED AND FOR THE
CONDITIONS IN WHICH THEY ARE TO BE USED. ALL MATERIALS USED IN CONNECTION WITH THE WORKS TO COMPLY WITH THE
CONSTRUCTION PRODUCTS REGULATION (CPR) NO. 305/2011 AND THE HARMONISED TECHNICAL SPECIFICATIONS/STANDARDS THAT
FALL WITHIN THE SCOPE OF THE CPR NO. 305/2011



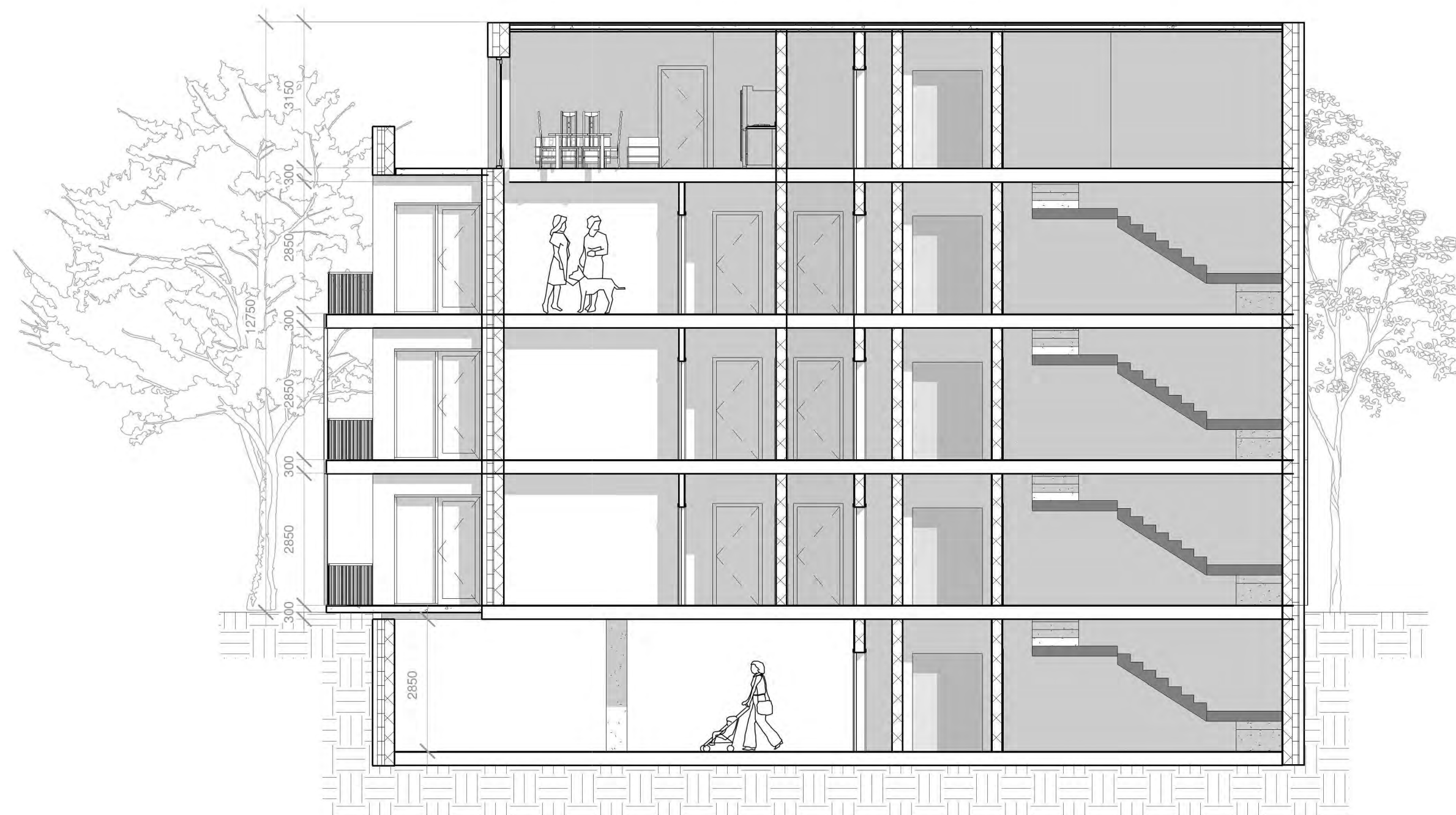
DRAWING TITLE
Part V - Block E - 4 Units - Elevations & Sections

SCALE 1:100	DRAWING NUMBER 1757-PA-062	JOB CLONMINTCH, TULLAMORE
REVISION S/A	MODEL STATUS	CLIENT STEINFORT INVESTMENTS
REVISED BY PD	DRAWING BY PD	DATE July 2021

NOTE:
FIGURED DIMENSIONS MUST BE USED IN PREFERENCE TO SCALE DIMENSIONS. ANY DIMENSIONAL DISCREPANCIES MUST BE
REPORTED TO THE ARCHITECT IMMEDIATELY. THIS DRAWING REMAINS THE COPYRIGHT OF VAN DIJK ARCHITECTS. IT MUST NOT
BE USED FOR ANY PURPOSES WITHOUT THE EXPRESS PERMISSION OF THE PRACTICE. DO NOT COPY OR
REPRODUCE THESE DRAWINGS OR ANY ADDITIONAL INFORMATION WITHOUT THE EXPRESS APPROVAL OF vanDijk Architects



1 Section 1
1:100



2 Section 2
1:100



3 3D View.

REV. NR	ISSUED BY	REV. DESCRIPTION	REV. DATE
---------	-----------	------------------	-----------

CPI NOTE:
ALL WORKS TO BE CARRIED OUT USING PROPER MATERIALS WHICH ARE FIT FOR THE USE THEY ARE INTENDED AND FOR THE
CONDITIONS IN WHICH THEY ARE TO BE USED. ALL MATERIALS USED IN CONNECTION WITH THE WORKS TO COMPLY WITH THE
CONSTRUCTION PRODUCTS REGULATION (CPR) NO. 305/2011 AND THE HARMONISED TECHNICAL SPECIFICATIONS/STANDARDS THAT
FALL WITHIN THE SCOPE OF THE CPR NO. 305/2011.



van Dijk Architects

MILL HOUSE, MILL STREET, DUNDALK, CO. LOUTH
PH. 042-9354466 FAX. 042-9354460
INFO@VANDIJKARCHITECTS.COM

DRAWING TITLE
Part V - Block E - Elevations & Sections

SCALE 1:100	DRAWING NUMBER 1757-PA-063	JOB CLONMINTCH, TULLAMORE
REVISION A1	MODEL STATUS	CLIENT STEINFORT INVESTMENTS
REVISED BY PD	DRAWING BY PD	DATE July 2021

NOTE
FIGURED DIMENSIONS MUST BE USED IN PREFERENCE TO SCALED DIMENSIONS. ANY DIMENSIONAL DISCREPANCIES MUST BE
REPORTED TO THE ARCHITECT IMMEDIATELY. THIS DRAWING REMAINS THE COPYRIGHT OF VAN DIJK ARCHITECTS. IT MUST NOT
BE USED FOR ANY PURPOSES WITHOUT THE EXPRESS PERMISSION OF THE PRACTICE. DO NOT COPY OR
REPRODUCE THESE DRAWINGS OR ANY ADDITIONAL INFORMATION WITHOUT THE EXPRESS APPROVAL OF vanDijk Architects